

## Anti-IL2RA antibody (223-272 aa) (STJ93693)

STJ93693

### GENERAL INFORMATION

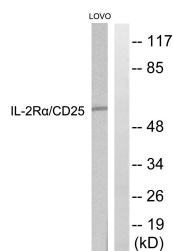
<b>Product Type</b>	Primary antibodies
<b>Short Description</b>	Rabbit polyclonal antibody anti-Interleukin-2 receptor subunit alpha (223-272 aa) is suitable for use in Western Blot, Immunofluorescence and ELISA research applications.
<b>Applications</b>	WB/IF/ELISA
<b>Host/Source</b>	Rabbit
<b>Reactivity</b>	Human/Rat/Mouse

### PRODUCT PROPERTIES

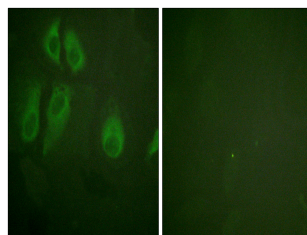
<b>Clonality</b>	Polyclonal
<b>Clone ID</b>	
<b>Concentration</b>	1 mg/mL
<b>Conjugation</b>	Unconjugated
<b>Purification</b>	The antibody was affinity-purified from rabbit antiserum by affinity-chromatography using epitope-specific immunogen.
<b>Dilution Range</b>	WB 1:500-1:2000 IF 1:200-1:1000 ELISA 1:20000
<b>Formulation</b>	Liquid in PBS containing 50% Glycerol, 0.5% BSA and 0.02% Sodium Azide.
<b>Isotype</b>	IgG
<b>Storage Instruction</b>	Store at -20°C for up to 1 year from the date of receipt, and avoid repeat freeze-thaw cycles.

### TARGET INFORMATION

<b>Gene ID</b>	3559
<b>Gene Symbol</b>	IL2RA
<b>Uniprot ID</b>	IL2RA_HUMAN
<b>Immunogen</b>	The antiserum was produced against synthesized peptide derived from the human IL-2R alpha/CD25 at the amino acid range 223-272
<b>Immunogen Region</b>	223-272 aa
<b>Specificity</b>	IL-2R Alpha Polyclonal Antibody detects endogenous levels of IL-2R Alpha protein.
<b>Immunogen Sequence</b>	



Western blot analysis of lysates from LOVO cells, using IL-2R alpha/CD25 Antibody. The lane on the right is blocked with the synthesized peptide.



Immunofluorescence analysis of HeLa cells, using IL-2R alpha/CD25 Antibody. The picture on the right is blocked with the synthesized peptide.