

Anti-IL17RA antibody (141-190 aa) (STJ93683)

STJ93683

GENERAL INFORMATION

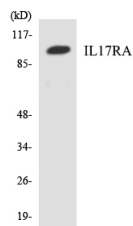
Product Type	Primary antibodies
Short Description	Rabbit polyclonal antibody anti-Interleukin-17 receptor A (141-190 aa) is suitable for use in Western Blot and ELISA research applications.
Applications	WB/ELISA
Host/Source	Rabbit
Reactivity	Human/Mouse

PRODUCT PROPERTIES

Clonality	Polyclonal
Clone ID	
Concentration	1 mg/mL
Conjugation	Unconjugated
Purification	The antibody was affinity-purified from rabbit antiserum by affinity-chromatography using epitope-specific immunogen.
Dilution Range	WB 1:500-1:2000 ELISA 1:40000
Formulation	Liquid in PBS containing 50% Glycerol, 0.5% BSA and 0.02% Sodium Azide.
Isotype	IgG
Storage Instruction	Store at -20°C for up to 1 year from the date of receipt, and avoid repeat freeze-thaw cycles.

TARGET INFORMATION

Gene ID	23765
Gene Symbol	IL17RA
Uniprot ID	I17RA_HUMAN
Immunogen	The antiserum was produced against synthesized peptide derived from the human IL17RA at the amino acid range 141-190
Immunogen Region	141-190 aa
Specificity	IL-17R Alpha Polyclonal Antibody detects endogenous levels of IL-17R Alpha protein.
Immunogen Sequence	



Western blot analysis of the lysates from HeLa cells using IL17RA antibody.

This product is suitable for in-vitro studies under the RESEARCH USE ONLY [RUO] licence. This product must not be used as for diagnostic or other medical purposes.
St John's Laboratory Ltd, Knowledge Dock Business Centre, University Way, London, E16 2RD | Tel: 0208 223 3081