

Anti-IL12B antibody (228-277 aa) (STJ93677)

STJ93677

GENERAL INFORMATION

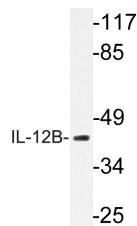
| | |
|--------------------------|---|
| Product Type | Primary antibodies |
| Short Description | Rabbit polyclonal antibody anti-Interleukin-12 subunit beta (228-277 aa) is suitable for use in Western Blot and ELISA research applications. |
| Applications | WB/ELISA |
| Host/Source | Rabbit |
| Reactivity | Human/Rat/Mouse |

PRODUCT PROPERTIES

| | |
|----------------------------|---|
| Clonality | Polyclonal |
| Clone ID | |
| Concentration | 1 mg/mL |
| Conjugation | Unconjugated |
| Purification | The antibody was affinity-purified from rabbit antiserum by affinity-chromatography using epitope-specific immunogen. |
| Dilution Range | WB 1:500-1:2000 ELISA 1:5000 |
| Formulation | Liquid in PBS containing 50% Glycerol, 0.5% BSA and 0.02% Sodium Azide. |
| Isotype | IgG |
| Storage Instruction | Store at -20°C for up to 1 year from the date of receipt, and avoid repeat freeze-thaw cycles. |

TARGET INFORMATION

| | |
|---------------------------|--|
| Gene ID | 3593 |
| Gene Symbol | IL12B |
| Uniprot ID | IL12B_HUMAN |
| Immunogen | The antiserum was produced against synthesized peptide derived from the human IL-12B at the amino acid range 228-277 |
| Immunogen Region | 228-277 aa |
| Specificity | IL-12B Polyclonal Antibody detects endogenous levels of IL-12B protein. |
| Immunogen Sequence | |



Western blot analysis of lysate from K562 cells, using IL-12B antibody.