

## Anti-IL12A antibody (16-65 aa) (STJ93676)

STJ93676

### GENERAL INFORMATION

<b>Product Type</b>	Primary antibodies
<b>Short Description</b>	Rabbit polyclonal antibody anti-Interleukin-12 subunit alpha (16-65 aa) is suitable for use in Western Blot, Immunohistochemistry, Immunofluorescence and ELISA research applications.
<b>Applications</b>	WB/IHC/IF/ELISA
<b>Host/Source</b>	Rabbit
<b>Reactivity</b>	Human/Mouse/Rat

### PRODUCT PROPERTIES

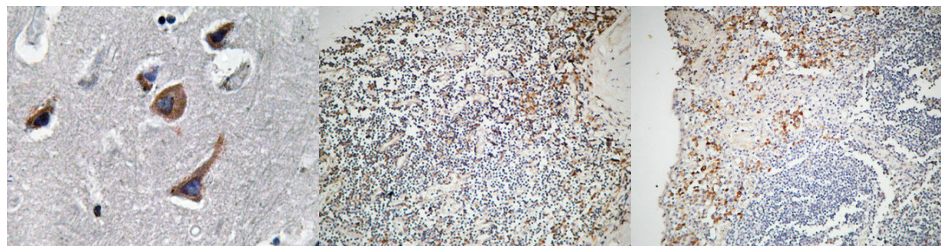
<b>Clonality</b>	Polyclonal
<b>Clone ID</b>	
<b>Concentration</b>	1 mg/mL
<b>Conjugation</b>	Unconjugated
<b>Purification</b>	The antibody was affinity-purified from rabbit antiserum by affinity-chromatography using epitope-specific immunogen.
<b>Dilution Range</b>	WB 1:500-1:2000 IHC-P 1:50-300 ELISA 1:20000 IF 1:50-200
<b>Formulation</b>	Liquid in PBS containing 50% Glycerol, 0.5% BSA and 0.02% Sodium Azide.
<b>Isotype</b>	IgG
<b>Storage Instruction</b>	Store at -20°C for up to 1 year from the date of receipt, and avoid repeat freeze-thaw cycles.

### TARGET INFORMATION

<b>Gene ID</b>	<a href="#">3592</a>
<b>Gene Symbol</b>	<a href="#">IL12A</a>
<b>Uniprot ID</b>	<a href="#">IL12A_HUMAN</a>
<b>Immunogen</b>	The antiserum was produced against synthesized peptide derived from the human IL-12A at the amino acid range 16-65
<b>Immunogen Region</b>	16-65 aa
<b>Specificity</b>	IL-12A Polyclonal Antibody detects endogenous levels of IL-12A protein.
<b>Immunogen Sequence</b>	

-117  
 -85  
 -49  
 -34  
 IL-12A- -25  
 -19

Western blot analysis of lysate from HeLa cells, using IL-12A antibody.



Immunohistochemistry analysis of IL-12A antibody in paraffin-embedded human brain tissue.

Immunohistochemical analysis of paraffin-embedded Human Amygdala. 1. Antibody was diluted at 1:200 (4°C overnight). 2. High-pressure and temperature EDTA, pH8.0 was used for antigen retrieval. 3. Secondary antibody was diluted at 1:200 (room temperature, 30min).

Immunohistochemical analysis of paraffin-embedded Human Amygdala. 1. Antibody was diluted at 1:200 (4°C overnight). 2. High-pressure and temperature EDTA, pH8.0 was used for antigen retrieval. 3. Secondary antibody was diluted at 1:200 (room temperature, 30min).

This product is suitable for in-vitro studies under the RESEARCH USE ONLY [RUO] licence. This product must not be used as for diagnostic or other medical purposes.

St John's Laboratory Ltd, Knowledge Dock Business Centre, University Way, London, E16 2RD | Tel: 0208 223 3081