

Anti-IL10RA antibody (462-511 aa) (STJ93673)

STJ93673

GENERAL INFORMATION

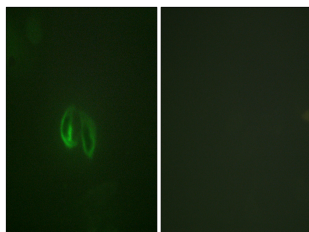
Product Type	Primary antibodies
Short Description	Rabbit polyclonal antibody anti-Interleukin-10 receptor subunit alpha (462-511 aa) is suitable for use in Western Blot, Immunofluorescence and ELISA research applications.
Applications	WB/IF/ELISA
Host/Source	Rabbit
Reactivity	Human/Rat/Mouse

PRODUCT PROPERTIES

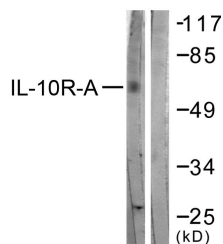
Clonality	Polyclonal
Clone ID	
Concentration	1 mg/mL
Conjugation	Unconjugated
Purification	The antibody was affinity-purified from rabbit antiserum by affinity-chromatography using epitope-specific immunogen.
Dilution Range	WB 1:500-1:2000 IF 1:200-1:1000 ELISA 1:10000
Formulation	Liquid in PBS containing 50% Glycerol, 0.5% BSA and 0.02% Sodium Azide.
Isotype	IgG
Storage Instruction	Store at -20°C for up to 1 year from the date of receipt, and avoid repeat freeze-thaw cycles.

TARGET INFORMATION

Gene ID	3587
Gene Symbol	IL10RA
Uniprot ID	I10R1_HUMAN
Immunogen	The antiserum was produced against synthesized peptide derived from the human IL-10R alpha at the amino acid range 462-511
Immunogen Region	462-511 aa
Specificity	IL-10R Alpha Polyclonal Antibody detects endogenous levels of IL-10R Alpha protein.
Immunogen Sequence	



Immunofluorescence analysis of HepG2 cells, using IL-10R alpha Antibody. The picture on the right is blocked with the synthesized peptide.



Western blot analysis of lysates from HepG2 cells, treated with Na₂VO₃ 0.3nM 40', using IL-10R alpha Antibody. The lane on the right is blocked with the synthesized peptide.



Western blot analysis of various cells using IL-10R Alpha Polyclonal Antibody