

Anti-CHUK antibody (15-64 aa) (STJ93665)

STJ93665

GENERAL INFORMATION

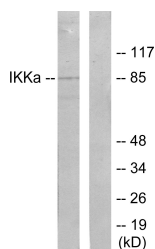
Product Type	Primary antibodies
Short Description	Rabbit polyclonal antibody anti-Inhibitor of nuclear factor kappa-B kinase subunit alpha (15-64 aa) is suitable for use in Western Blot, Immunohistochemistry, Immunofluorescence and ELISA research applications.
Applications	WB/IHC/IF/ELISA
Host/Source	Rabbit
Reactivity	Human/Mouse/Rat

PRODUCT PROPERTIES

Clonality	Polyclonal
Clone ID	
Concentration	1 mg/mL
Conjugation	Unconjugated
Purification	The antibody was affinity-purified from rabbit antiserum by affinity-chromatography using epitope-specific immunogen.
Dilution	WB 1:500-1:2000
Range	IHC 1:100-1:300 ELISA 1:10000 IF 1:50-200
Formulation	Liquid in PBS containing 50% Glycerol, 0.5% BSA and 0.02% Sodium Azide.
Isotype	IgG
Storage Instruction	Store at -20°C for up to 1 year from the date of receipt, and avoid repeat freeze-thaw cycles.

TARGET INFORMATION

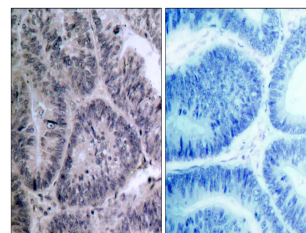
Gene ID	1147
Gene Symbol	CHUK
Uniprot ID	IKKA_HUMAN
Immunogen	The antiserum was produced against synthesized peptide derived from the human IKK-alpha at the amino acid range 15-64
Immunogen Region	15-64 aa
Specificity	IKK Alpha Polyclonal Antibody detects endogenous levels of IKK Alpha protein.
Immunogen Sequence	



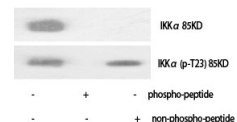
Western blot analysis of lysates from 293 cells, treated with EGF, using IKK-alpha Antibody. The lane on the right is blocked with the synthesized peptide.



Western blot analysis of 293 cells using IKK Alpha Polyclonal Antibody diluted at 1:1000



Immunohistochemistry analysis of paraffin-embedded human colon carcinoma tissue, using IKK-alpha Antibody. The picture on the right is blocked with the synthesized peptide.



Western blot analysis of various cells using IKK Alpha Polyclonal Antibody diluted at 1:1000