

Anti-IGF2BP2 antibody (141-190 aa) (STJ93649)

STJ93649

GENERAL INFORMATION

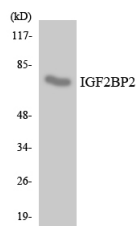
Product Type	Primary antibodies
Short Description	Rabbit polyclonal antibody anti-Insulin-like growth factor 2 mRNA-binding protein 2 (141-190 aa) is suitable for use in Western Blot and ELISA research applications.
Applications	WB/ELISA
Host/Source	Rabbit
Reactivity	Human/Rat/Mouse

PRODUCT PROPERTIES

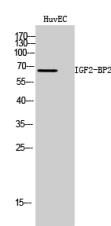
Clonality	Polyclonal
Clone ID	
Concentration	1 mg/mL
Conjugation	Unconjugated
Purification	The antibody was affinity-purified from rabbit antiserum by affinity-chromatography using epitope-specific immunogen.
Dilution Range	WB 1:500-1:2000 ELISA 1:20000
Formulation	Liquid in PBS containing 50% Glycerol, 0.5% BSA and 0.02% Sodium Azide.
Isotype	IgG
Storage	Store at -20°C for up to 1 year from the date of receipt, and avoid repeat freeze-thaw cycles.
Instruction	

TARGET INFORMATION

Gene ID	10644
Gene Symbol	IGF2BP2
Uniprot ID	IF2B2_HUMAN
Immunogen	The antiserum was produced against synthesized peptide derived from the human IGF2BP2 at the amino acid range 141-190
Immunogen Region	141-190 aa
Specificity	IGF2-BP2 Polyclonal Antibody detects endogenous levels of IGF2-BP2 protein.
Immunogen Sequence	



Western blot analysis of the lysates from Jurkat cells using IGF2BP2 antibody.



Western blot analysis of HuvEC cells using IGF2-BP2 Polyclonal Antibody

This product is suitable for in-vitro studies under the RESEARCH USE ONLY [RUO] licence. This product must not be used as for diagnostic or other medical purposes.
St John's Laboratory Ltd, Knowledge Dock Business Centre, University Way, London, E16 2RD | Tel: 0208 223 3081