

Anti-IARS2 antibody (71-120 aa) (STJ93632)

STJ93632

GENERAL INFORMATION

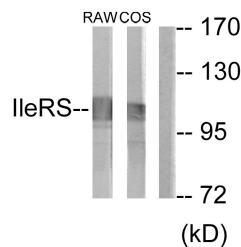
Product Type	Primary antibodies
Short Description	Rabbit polyclonal antibody anti-Isoleucine--tRNA ligase, mitochondrial (71-120 aa) is suitable for use in Western Blot, Immunohistochemistry, Immunofluorescence and ELISA research applications.
Applications	WB/IHC/IF/ELISA
Host/Source	Rabbit
Reactivity	Human/Mouse/Monkey

PRODUCT PROPERTIES

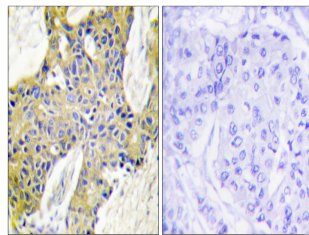
Clonality	Polyclonal
Clone ID	
Concentration	1 mg/mL
Conjugation	Unconjugated
Purification	The antibody was affinity-purified from rabbit antiserum by affinity-chromatography using epitope-specific immunogen.
Dilution Range	WB 1:500-1:2000 IHC 1:100-1:300 IF 1:200-1:1000 ELISA 1:20000
Formulation	Liquid in PBS containing 50% Glycerol, 0.5% BSA and 0.02% Sodium Azide.
Isotype	IgG
Storage Instruction	Store at -20°C for up to 1 year from the date of receipt, and avoid repeat freeze-thaw cycles.

TARGET INFORMATION

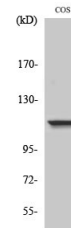
Gene ID	55699
Gene Symbol	IARS2
Uniprot ID	SYIM_HUMAN
Immunogen	The antiserum was produced against synthesized peptide derived from the human IARS2 at the amino acid range 71-120
Immunogen Region	71-120 aa
Specificity	IARS2 Polyclonal Antibody detects endogenous levels of IARS2 protein.
Immunogen Sequence	



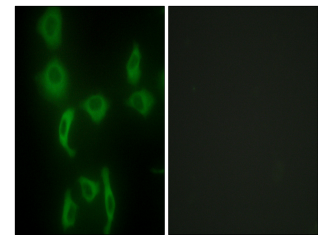
Western blot analysis of lysates from RAW264.7 and COS7 cells, using IARS2 Antibody. The lane on the right is blocked with the synthesized peptide.



Immunohistochemistry analysis of paraffin-embedded human breast carcinoma tissue, using IARS2 Antibody. The picture on the right is blocked with the synthesized peptide.



Western blot analysis of NIH-3T3 cells using IARS2 Polyclonal Antibody diluted at 1:4 2000



Immunofluorescence analysis of HepG2 cells, using IARS2 Antibody. The picture on the right is blocked with the synthesized peptide.

This product is suitable for in-vitro studies under the RESEARCH USE ONLY [RUO] licence. This product must not be used as for diagnostic or other medical purposes.
St John's Laboratory Ltd, Knowledge Dock Business Centre, University Way, London, E16 2RD | Tel: 0208 223 3081