

Anti-TPT1 antibody (71-120 aa) (STJ93591)

STJ93591

GENERAL INFORMATION

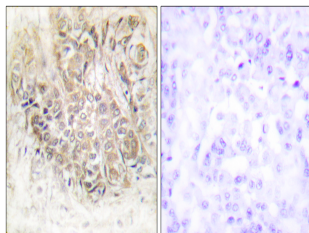
Product Type	Primary antibodies
Short Description	Rabbit polyclonal antibody anti-Translationally-controlled tumor protein (71-120 aa) is suitable for use in Western Blot, Immunohistochemistry, Immunofluorescence and ELISA research applications.
Applications	WB/IHC/IF/ELISA
Host/Source	Rabbit
Reactivity	Human/Mouse/Rat

PRODUCT PROPERTIES

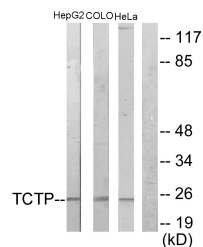
Clonality	Polyclonal
Clone ID	
Concentration	1 mg/mL
Conjugation	Unconjugated
Purification	The antibody was affinity-purified from rabbit antiserum by affinity-chromatography using epitope-specific immunogen.
Dilution Range	WB 1:500-1:2000 IHC 1:100-1:300 IF 1:200-1:1000 ELISA 1:20000
Formulation	Liquid in PBS containing 50% Glycerol, 0.5% BSA and 0.02% Sodium Azide.
Isotype	IgG
Storage Instruction	Store at -20°C for up to 1 year from the date of receipt, and avoid repeat freeze-thaw cycles.

TARGET INFORMATION

Gene ID	7178
Gene Symbol	TPT1
Uniprot ID	TCTP_HUMAN
Immunogen	The antiserum was produced against synthesized peptide derived from the human TCTP at the amino acid range 71-120
Immunogen Region	71-120 aa
Specificity	HRF Polyclonal Antibody detects endogenous levels of HRF protein.
Immunogen Sequence	



Immunohistochemistry analysis of paraffin-embedded human breast carcinoma tissue, using TCTP Antibody. The picture on the right is blocked with the synthesized peptide.



Western blot analysis of lysates from HepG2 and COLO205/HeLa cells, using TCTP Antibody. The lane on the right is blocked with the synthesized peptide.



Western blot analysis of various cells using HRF Polyclonal Antibody.