

Anti-HoxA11/D11 antibody (216-265 aa) (STJ93575)

STJ93575

GENERAL INFORMATION

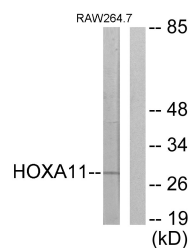
Product Type	Primary antibodies
Short Description	Rabbit polyclonal antibody anti-Homeobox protein Hox-A11 and Homeobox protein Hox-D11 (216-265 aa) is suitable for use in Western Blot, Immunohistochemistry, Immunofluorescence and ELISA research applications.
Applications	WB/IHC/IF/ELISA
Host/Source	Rabbit
Reactivity	Human/Mouse

PRODUCT PROPERTIES

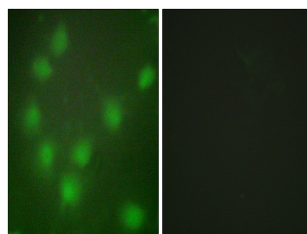
Clonality	Polyclonal
Clone ID	
Concentration	1 mg/mL
Conjugation	Unconjugated
Purification	The antibody was affinity-purified from rabbit antiserum by affinity-chromatography using epitope-specific immunogen.
Dilution	WB 1:500-1:2000
Range	IHC 1:100-1:300 IF 1:200-1:1000 ELISA 1:20000
Formulation	Liquid in PBS containing 50% Glycerol, 0.5% BSA and 0.02% Sodium Azide.
Isotype	IgG
Storage Instruction	Store at -20°C for up to 1 year from the date of receipt, and avoid repeat freeze-thaw cycles.

TARGET INFORMATION

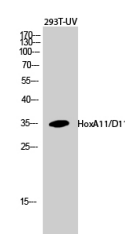
Gene ID	3237 3207
Gene Symbol	HOXD11 HOXA11
Uniprot ID	HXD11_HUMAN HXA11_HUMAN
Immunogen	The antiserum was produced against synthesized peptide derived from the human HOXA11/D11 at the amino acid range 216-265
Immunogen Region	216-265 aa
Specificity	HoxA11/D11 Polyclonal Antibody detects endogenous levels of HoxA11/D11 protein.
Immunogen Sequence	



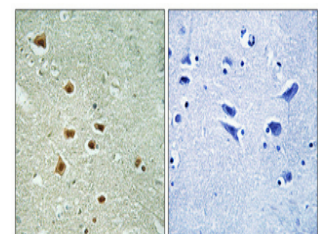
Western blot analysis of lysates from RAW264.7 cells, using HOXA11/D11 Antibody. The lane on the right is blocked with the synthesized peptide.



Immunofluorescence analysis of HUVEC cells, using HOXA11/D11 Antibody. The picture on the right is blocked with the synthesized peptide.



Western blot analysis of 293T-UV cells using HoxA11/D11 Polyclonal Antibody diluted at 1:4500 cells nucleus extracted by Minute TM Cytoplasmic and Nuclear Fractionation kit (SC-003, Inventibiotec, MN, USA).



Immunohistochemical analysis of paraffin-embedded Human brain. Antibody was diluted at 1:100 (4°C overnight). High-pressure and temperature Tris-EDTA, pH8.0 was used for antigen retrieval. Negative control (right) obtained from antibody was pre-absorbed by immunogen peptide.

This product is suitable for in-vitro studies under the RESEARCH USE ONLY [RUO] licence. This product must not be used as for diagnostic or other medical purposes.
St John's Laboratory Ltd, Knowledge Dock Business Centre, University Way, London, E16 2RD | Tel: 0208 223 3081