

Anti-H2BC12L antibody (10-59 aa) (STJ93522)

STJ93522

GENERAL INFORMATION

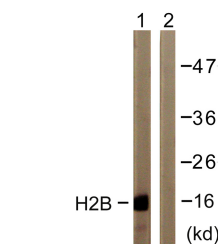
Product Type	Primary antibodies
Short Description	Rabbit polyclonal antibody anti-Histone H2B type F-S (10-59 aa) is suitable for use in Western Blot, Immunohistochemistry, Immunofluorescence and ELISA research applications.
Applications	WB/IHC/IF/ELISA
Host/Source	Rabbit
Reactivity	Human/Mouse/Monkey

PRODUCT PROPERTIES

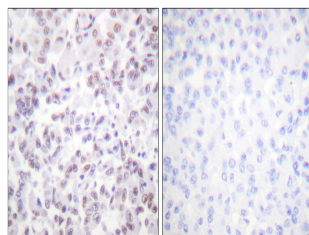
Clonality	Polyclonal
Clone ID	
Concentration	1 mg/mL
Conjugation	Unconjugated
Purification	The antibody was affinity-purified from rabbit antiserum by affinity-chromatography using epitope-specific immunogen.
Dilution Range	WB 1:500-1:2000 IHC 1:100-1:300 IF 1:200-1:1000 ELISA 1:5000
Formulation	Liquid in PBS containing 50% Glycerol, 0.5% BSA and 0.02% Sodium Azide.
Isotype	IgG
Storage Instruction	Store at -20°C for up to 1 year from the date of receipt, and avoid repeat freeze-thaw cycles.

TARGET INFORMATION

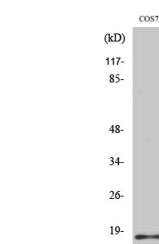
Gene ID	102724334
Gene Symbol	H2BC12L
Uniprot ID	H2BFS_HUMAN
Immunogen	The antiserum was produced against synthesized peptide derived from the human Histone H2B at the amino acid range 10-59
Immunogen Region	10-59 aa
Specificity	Histone H2B Polyclonal Antibody detects endogenous levels of Histone H2B protein.
Immunogen Sequence	



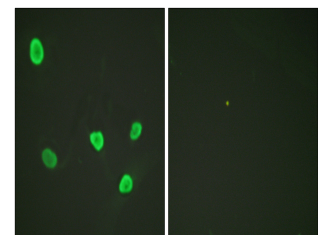
Western blot analysis of lysates from COS7 cells, treated with TSA 400nM 24h, using Histone H2B Antibody. The lane on the right is blocked with the synthesized peptide.



Immunohistochemistry analysis of paraffin-embedded human breast carcinoma tissue, using Histone H2B Antibody. The picture on the right is blocked with the synthesized peptide.



Western blot analysis of COS7 cells using Histone H2B Polyclonal Antibody diluted at 1:1000 cells nucleus extracted by Minute TM Cytoplasmic and Nuclear Fractionation kit (SC-003, Inventiotech, MN, USA).



Immunofluorescence analysis of HeLa cells, using Histone H2B Antibody. The picture on the right is blocked with the synthesized peptide.