

## Anti-H2AX antibody (94-143 aa) (STJ93520)

STJ93520

### GENERAL INFORMATION

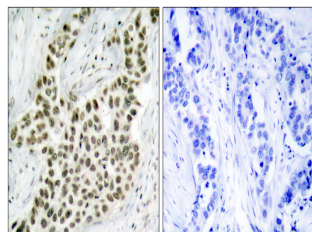
<b>Product Type</b>	Primary antibodies
<b>Short Description</b>	Rabbit polyclonal antibody anti-Histone H2AX (94-143 aa) is suitable for use in Western Blot, Immunohistochemistry, Immunofluorescence, Colimmunoprecipitation and ELISA research applications.
<b>Applications</b>	WB/IHC/IF/CoIP/ELISA
<b>Host/Source</b>	Rabbit
<b>Reactivity</b>	Human/Mouse/Rat

### PRODUCT PROPERTIES

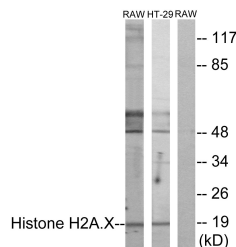
<b>Clonality</b>	Polyclonal
<b>Clone ID</b>	
<b>Concentration</b>	1 mg/mL
<b>Conjugation</b>	Unconjugated
<b>Purification</b>	The antibody was affinity-purified from rabbit antiserum by affinity-chromatography using epitope-specific immunogen.
<b>Dilution Range</b>	WB 1:500-1:2000 IHC 1:100-1:300 IF 1:200-1:1000 IP 1:200-500 ELISA 1:10000
<b>Formulation</b>	Liquid in PBS containing 50% Glycerol, 0.5% BSA and 0.02% Sodium Azide.
<b>Isotype</b>	IgG
<b>Storage</b>	Store at -20°C for up to 1 year from the date of receipt, and avoid repeat freeze-thaw cycles.
<b>Instruction</b>	

### TARGET INFORMATION

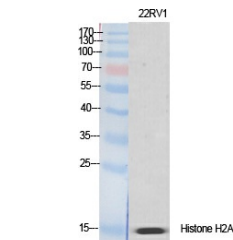
<b>Gene ID</b>	3014
<b>Gene Symbol</b>	H2AX
<b>Uniprot ID</b>	H2AX_HUMAN
<b>Immunogen</b>	The antiserum was produced against synthesized peptide derived from the human Histone H2A.X at the amino acid range 94-143
<b>Immunogen Region</b>	94-143 aa
<b>Specificity</b>	Histone H2A.X Polyclonal Antibody detects endogenous levels of Histone H2A.X protein.
<b>Immunogen Sequence</b>	



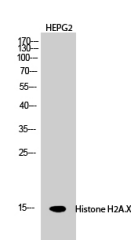
Immunohistochemistry analysis of paraffin-embedded human breast carcinoma tissue, using Histone H2A.X Antibody. The picture on the right is blocked with the synthesized peptide.



Western blot analysis of lysates from RAW246.7/HT-29, using Histone H2A.X Antibody. The lane on the right is blocked with the synthesized peptide.



Western blot analysis of various cells using Histone H2A.X Polyclonal Antibody diluted at 1/142000 cells nucleus extracted by Minute TM Cytoplasmic and Nuclear Fractionation kit (SC-003, Inventibiotec, MN, USA).



Western blot analysis of HEPG2 cells using Histone H2A.X Polyclonal Antibody diluted at 1/142000 cells nucleus extracted by Minute TM Cytoplasmic and Nuclear Fractionation kit (SC-003, Inventibiotec, MN, USA).