

Anti-HDAC7 antibody (901-950 aa) (STJ93513)

STJ93513

GENERAL INFORMATION

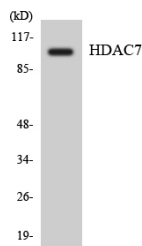
Product Type	Primary antibodies
Short Description	Rabbit polyclonal antibody anti-Histone deacetylase 7 (901-950 aa) is suitable for use in Western Blot, Immunohistochemistry, Immunofluorescence and ELISA research applications.
Applications	WB/IHC/IF/ELISA
Host/Source	Rabbit
Reactivity	Human/Mouse

PRODUCT PROPERTIES

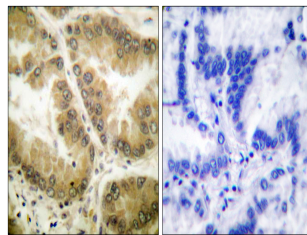
Clonality	Polyclonal
Clone ID	
Concentration	1 mg/mL
Conjugation	Unconjugated
Purification	The antibody was affinity-purified from rabbit antiserum by affinity-chromatography using epitope-specific immunogen.
Dilution Range	WB 1:500-1:2000 IHC 1:100-1:300 ELISA 1:10000 IF 1:50-200
Formulation	Liquid in PBS containing 50% Glycerol, 0.5% BSA and 0.02% Sodium Azide.
Isotype	IgG
Storage Instruction	Store at -20°C for up to 1 year from the date of receipt, and avoid repeat freeze-thaw cycles.

TARGET INFORMATION

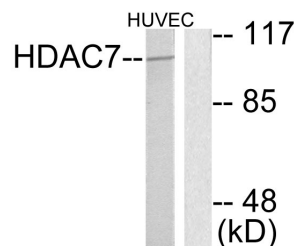
Gene ID	51564
Gene Symbol	HDAC7
Uniprot ID	HDAC7_HUMAN
Immunogen	The antiserum was produced against synthesized peptide derived from the human HDAC7 at the amino acid range 901-950
Immunogen Region	901-950 aa
Specificity	Histone deacetylase 7a Polyclonal Antibody detects endogenous levels of Histone deacetylase 7a protein.
Immunogen Sequence	



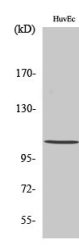
Western blot analysis of the lysates from COLO205 cells using HDAC7 antibody.



Immunohistochemistry analysis of paraffin-embedded human lung carcinoma tissue, using HDAC7 Antibody. The picture on the right is blocked with the synthesized peptide.



Western blot analysis of lysates from HUVEC cells, using HDAC7 Antibody. The lane on the right is blocked with the synthesized peptide.



Western blot analysis of various cells using Histone deacetylase 7a Polyclonal Antibody

This product is suitable for in-vitro studies under the RESEARCH USE ONLY [RUO] licence. This product must not be used as for diagnostic or other medical purposes.
St John's Laboratory Ltd, Knowledge Dock Business Centre, University Way, London, E16 2RD | Tel: 0208 223 3081