

## Anti-HDAC10 antibody (10-59 aa) (STJ93511)

STJ93511

### GENERAL INFORMATION

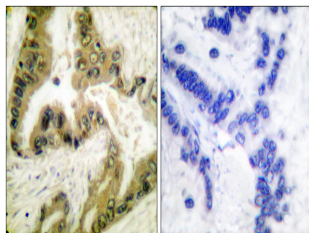
<b>Product Type</b>	Primary antibodies
<b>Short Description</b>	Rabbit polyclonal antibody anti-Polyamine deacetylase HDAC10 (10-59 aa) is suitable for use in Western Blot, Immunohistochemistry, Immunofluorescence and ELISA research applications.
<b>Applications</b>	WB/IHC/IF/ELISA
<b>Host/Source</b>	Rabbit
<b>Reactivity</b>	Human/Mouse/Rat/Monkey

### PRODUCT PROPERTIES

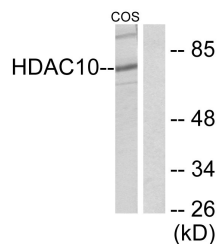
<b>Clonality</b>	Polyclonal
<b>Clone ID</b>	
<b>Concentration</b>	1 mg/mL
<b>Conjugation</b>	Unconjugated
<b>Purification</b>	The antibody was affinity-purified from rabbit antiserum by affinity-chromatography using epitope-specific immunogen.
<b>Dilution Range</b>	WB 1:500-1:2000 IHC 1:100-1:300 ELISA 1:10000 IF 1:50-200
<b>Formulation</b>	Liquid in PBS containing 50% Glycerol, 0.5% BSA and 0.02% Sodium Azide.
<b>Isotype</b>	IgG
<b>Storage Instruction</b>	Store at -20°C for up to 1 year from the date of receipt, and avoid repeat freeze-thaw cycles.

### TARGET INFORMATION

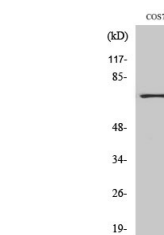
<b>Gene ID</b>	83933
<b>Gene Symbol</b>	HDAC10
<b>Uniprot ID</b>	HDA10_HUMAN
<b>Immunogen</b>	The antiserum was produced against synthesized peptide derived from the human HDAC10 at the amino acid range 10-59
<b>Immunogen Region</b>	10-59 aa
<b>Specificity</b>	Histone deacetylase 10 Polyclonal Antibody detects endogenous levels of Histone deacetylase 10 protein.
<b>Immunogen Sequence</b>	



Immunohistochemistry analysis of paraffin-embedded human lung carcinoma tissue, using HDAC10 Antibody. The picture on the right is blocked with the synthesized peptide.



Western blot analysis of lysates from COS7 cells, using HDAC10 Antibody. The lane on the right is blocked with the synthesized peptide.



Western blot analysis of various cells using Histone deacetylase 10 Polyclonal Antibody diluted at 1:1000