

Anti-HRH4 antibody (221-270 aa) (STJ93508)

STJ93508

GENERAL INFORMATION

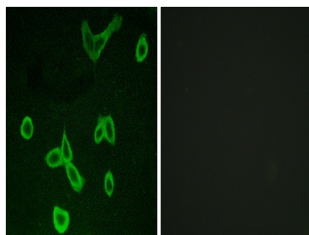
| | |
|--------------------------|---|
| Product Type | Primary antibodies |
| Short Description | Rabbit polyclonal antibody anti-Histamine H4 receptor (221-270 aa) is suitable for use in Western Blot, Immunofluorescence and ELISA research applications. |
| Applications | WB/IF/ELISA |
| Host/Source | Rabbit |
| Reactivity | Human/Rat/Mouse |

PRODUCT PROPERTIES

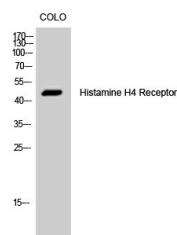
| | |
|----------------------------|---|
| Clonality | Polyclonal |
| Clone ID | |
| Concentration | 1 mg/mL |
| Conjugation | Unconjugated |
| Purification | The antibody was affinity-purified from rabbit antiserum by affinity-chromatography using epitope-specific immunogen. |
| Dilution Range | WB 1:500-1:2000 IF 1:200-1:1000 ELISA 1:5000 |
| Formulation | Liquid in PBS containing 50% Glycerol, 0.5% BSA and 0.02% Sodium Azide. |
| Isotype | IgG |
| Storage Instruction | Store at 20°C for up to 1 year from the date of receipt, and avoid repeat freeze-thaw cycles. |

TARGET INFORMATION

| | |
|---------------------------|--|
| Gene ID | 59340 |
| Gene Symbol | HRH4 |
| Uniprot ID | HRH4_HUMAN |
| Immunogen | The antiserum was produced against synthesized peptide derived from the human HRH4 at the amino acid range 221-270 |
| Immunogen Region | 221-270 aa |
| Specificity | Histamine H4 Receptor Polyclonal Antibody detects endogenous levels of Histamine H4 Receptor protein. |
| Immunogen Sequence | |



Immunofluorescence analysis of LOVO cells, using HRH4 Antibody. The picture on the right is blocked with the synthesized peptide.



Western blot analysis of COLO cells using Histamine H4 Receptor Polyclonal Antibody

This product is suitable for in-vitro studies under the RESEARCH USE ONLY [RUO] licence. This product must not be used as for diagnostic or other medical purposes.
St John's Laboratory Ltd, Knowledge Dock Business Centre, University Way, London, E16 2RD | Tel: 0208 223 3081