

Anti-HRH1 antibody (141-190 aa) (STJ93505)

STJ93505

GENERAL INFORMATION

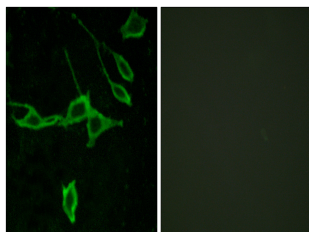
Product Type	Primary antibodies
Short Description	Rabbit polyclonal antibody anti-Histamine H1 receptor (141-190 aa) is suitable for use in Western Blot, Immunofluorescence and ELISA research applications.
Applications	WB/IF/ELISA
Host/Source	Rabbit
Reactivity	Human/Rat/Mouse

PRODUCT PROPERTIES

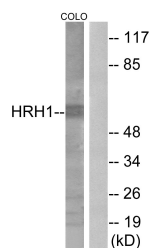
Clonality	Polyclonal
Clone ID	
Concentration	1 mg/mL
Conjugation	Unconjugated
Purification	The antibody was affinity-purified from rabbit antiserum by affinity-chromatography using epitope-specific immunogen.
Dilution Range	WB 1:500-1:2000 IF 1:200-1:1000 ELISA 1:10000
Formulation	Liquid in PBS containing 50% Glycerol, 0.5% BSA and 0.02% Sodium Azide.
Isotype	IgG
Storage	Store at -20°C for up to 1 year from the date of receipt, and avoid repeat freeze-thaw cycles.
Instruction	

TARGET INFORMATION

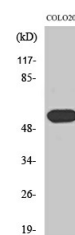
Gene ID	3269
Gene Symbol	HRH1
Uniprot ID	HRH1_HUMAN
Immunogen	The antiserum was produced against synthesized peptide derived from the human HRH1 at the amino acid range 141-190
Immunogen Region	141-190 aa
Specificity	Histamine H1 Receptor Polyclonal Antibody detects endogenous levels of Histamine H1 Receptor protein.
Immunogen Sequence	



Immunofluorescence analysis of LOVO cells, using HRH1 Antibody. The picture on the right is blocked with the synthesized peptide.



Western blot analysis of lysates from COLO205 cells, using HRH1 Antibody. The lane on the right is blocked with the synthesized peptide.



Western blot analysis of various cells using Histamine H1 Receptor Polyclonal Antibody diluted at 10⁴ 2000

This product is suitable for in-vitro studies under the RESEARCH USE ONLY [RUO] licence. This product must not be used as for diagnostic or other medical purposes.
St John's Laboratory Ltd, Knowledge Dock Business Centre, University Way, London, E16 2RD | Tel: 0208 223 3081