

## Anti-HCFC1 antibody (131-180 aa) (STJ93473)

STJ93473

### GENERAL INFORMATION

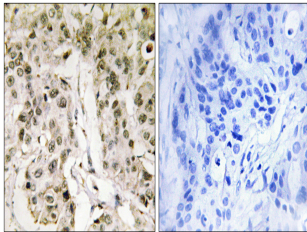
<b>Product Type</b>	Primary antibodies
<b>Short Description</b>	Rabbit polyclonal antibody anti-Host cell factor 1 (131-180 aa) is suitable for use in Immunohistochemistry, Immunofluorescence, Western Blot and ELISA research applications.
<b>Applications</b>	IHC/IF/WB/ELISA
<b>Host/Source</b>	Rabbit
<b>Reactivity</b>	Human/Mouse

### PRODUCT PROPERTIES

<b>Clonality</b>	Polyclonal
<b>Clone ID</b>	
<b>Concentration</b>	1 mg/mL
<b>Conjugation</b>	Unconjugated
<b>Purification</b>	The antibody was affinity-purified from rabbit antiserum by affinity-chromatography using epitope-specific immunogen.
<b>Dilution Range</b>	WB 1:500-2000 IHC 1:100-1:300 ELISA 1:20000 IF 1:50-200
<b>Formulation</b>	Liquid in PBS containing 50% Glycerol, 0.5% BSA and 0.02% Sodium Azide.
<b>Isotype</b>	IgG
<b>Storage Instruction</b>	Store at -20°C for up to 1 year from the date of receipt, and avoid repeat freeze-thaw cycles.

### TARGET INFORMATION

<b>Gene ID</b>	3054
<b>Gene Symbol</b>	HCFC1
<b>Uniprot ID</b>	HCFC1_HUMAN
<b>Immunogen</b>	The antiserum was produced against synthesized peptide derived from the human HCFC1 at the amino acid range 131-180
<b>Immunogen Region</b>	131-180 aa
<b>Specificity</b>	HCFC1 Polyclonal Antibody detects endogenous levels of HCF1 protein.
<b>Immunogen Sequence</b>	



Immunohistochemistry analysis of paraffin-embedded human breast carcinoma tissue, using HCFC1 Antibody. The picture on the right is blocked with the synthesized peptide.