

## Anti-HAT1 antibody (331-380 aa) (STJ93465)

STJ93465

### GENERAL INFORMATION

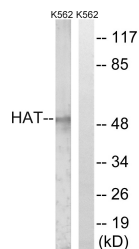
<b>Product Type</b>	Primary antibodies
<b>Short Description</b>	Rabbit polyclonal antibody anti-Histone acetyltransferase type B catalytic subunit (331-380 aa) is suitable for use in Western Blot and ELISA research applications.
<b>Applications</b>	WB/ELISA
<b>Host/Source</b>	Rabbit
<b>Reactivity</b>	Human/Mouse/Rat

### PRODUCT PROPERTIES

<b>Clonality</b>	Polyclonal
<b>Clone ID</b>	
<b>Concentration</b>	1 mg/mL
<b>Conjugation</b>	Unconjugated
<b>Purification</b>	The antibody was affinity-purified from rabbit antiserum by affinity-chromatography using epitope-specific immunogen.
<b>Dilution Range</b>	WB 1:500-1:2000 ELISA 1:5000
<b>Formulation</b>	Liquid in PBS containing 50% Glycerol, 0.5% BSA and 0.02% Sodium Azide.
<b>Isotype</b>	IgG
<b>Storage</b>	Store at -20°C for up to 1 year from the date of receipt, and avoid repeat freeze-thaw cycles.
<b>Instruction</b>	

### TARGET INFORMATION

<b>Gene ID</b>	8520
<b>Gene Symbol</b>	HAT1
<b>Uniprot ID</b>	HAT1_HUMAN
<b>Immunogen</b>	The antiserum was produced against synthesized peptide derived from the human HAT at the amino acid range 331-380
<b>Immunogen Region</b>	331-380 aa
<b>Specificity</b>	HAT1 Polyclonal Antibody detects endogenous levels of HAT1 protein.
<b>Immunogen Sequence</b>	



Western blot analysis of lysates from K562 cells, using HAT Antibody. The lane on the right is blocked with the synthesized peptide.