

## Anti-GSK3B antibody (1-50 aa) (STJ93447)

STJ93447

### GENERAL INFORMATION

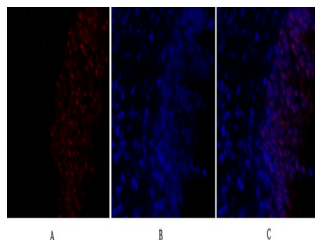
<b>Product Type</b>	Primary antibodies
<b>Short Description</b>	Rabbit polyclonal antibody anti-Glycogen synthase kinase-3 beta (1-50 aa) is suitable for use in Immunofluorescence, Western Blot, Immunohistochemistry, Immunoprecipitation and ELISA research applications.
<b>Applications</b>	IF/WB/IHC/IP/ELISA
<b>Host/Source</b>	Rabbit
<b>Reactivity</b>	Human/Mouse/Rat/Rabbit

### PRODUCT PROPERTIES

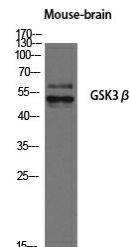
<b>Clonality</b>	Polyclonal
<b>Clone ID</b>	
<b>Concentration</b>	1 mg/mL
<b>Conjugation</b>	Unconjugated
<b>Purification</b>	The antibody was affinity-purified from rabbit antiserum by affinity-chromatography using epitope-specific immunogen.
<b>Dilution</b>	IF 1:50-200
<b>Range</b>	WB 1:500-1:2000 IHC 1:100-1:300 IP 2-5 ug mg/lysate ELISA 1:20000
<b>Formulation</b>	Liquid in PBS containing 50% Glycerol, 0.5% BSA and 0.02% Sodium Azide.
<b>Isotype</b>	IgG
<b>Storage</b>	Store at -20°C for up to 1 year from the date of receipt, and avoid repeat freeze-thaw cycles.
<b>Instruction</b>	

### TARGET INFORMATION

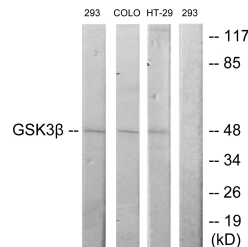
<b>Gene ID</b>	2932
<b>Gene Symbol</b>	GSK3B
<b>Uniprot ID</b>	GSK3B_HUMAN
<b>Immunogen</b>	The antiserum was produced against synthesized peptide derived from the human GSK3B at the amino acid range 1-50
<b>Immunogen Region</b>	1-50 aa
<b>Specificity</b>	GSK3 Beta Polyclonal Antibody detects endogenous levels of GSK3 Beta protein.
<b>Immunogen Sequence</b>	



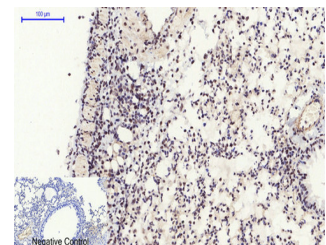
Immunofluorescence analysis of rat-lung tissue. 1. GSK3 Beta Polyclonal Antibody (red) was diluted at 1:200 (4A°C, overnight). 2. Cy3 labeled Secondary antibody was diluted at 1:300 (room temperature, 50min). 3. Picture B: DAPI (blue) 10min. Picture A: Target. Picture B: DAPI. Picture C: merge of A+B



Western blot analysis of NIH-3T3 cells using GSK3 Beta Polyclonal Antibody diluted at 1/4 2000



Western blot analysis of lysates from 293, COLO205, and HT29 cells, using GSK3 beta Antibody. The lane on the right is blocked with the synthesized peptide.



Immunohistochemical analysis of paraffin-embedded Mouse-lung tissue. 1. GSK3 Beta Polyclonal Antibody was diluted at 1:200 (4A°C, overnight). 2. Sodium citrate pH 6.0 was used for antibody retrieval (>98A°C, 20min). 3. Secondary antibody was diluted at 1:200 (room temperature, 30min). Negative control was used by secondary antibody only.

This product is suitable for in-vitro studies under the RESEARCH USE ONLY [RUO] licence. This product must not be used as for diagnostic or other medical purposes.

St John's Laboratory Ltd, Knowledge Dock Business Centre, University Way, London, E16 2RD | Tel: 0208 223 3081