

Anti-GSK3 Alpha/Beta antibody (246-295 aa) (STJ93446)

STJ93446

GENERAL INFORMATION

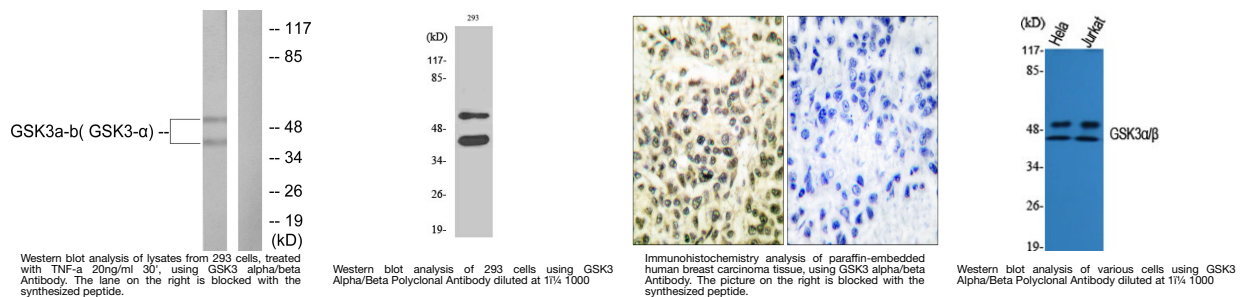
Product Type	Primary antibodies
Short Description	Rabbit polyclonal antibody anti-Glycogen synthase kinase-3 alpha and Glycogen synthase kinase-3 beta (246-295 aa) is suitable for use in Western Blot, Immunohistochemistry, Immunofluorescence and ELISA research applications.
Applications	WB/IHC/IF/ELISA
Host/Source	Rabbit
Reactivity	Human/Mouse/Rat/D.melanogaster

PRODUCT PROPERTIES

Clonality	Polyclonal
Clone ID	
Concentration	1 mg/mL
Conjugation	Unconjugated
Purification	The antibody was affinity-purified from rabbit antiserum by affinity-chromatography using epitope-specific immunogen.
Dilution Range	WB 1:500-1:2000 IHC 1:100-1:300 ELISA 1:20000 IF 1:50-200
Formulation	Liquid in PBS containing 50% Glycerol, 0.5% BSA and 0.02% Sodium Azide.
Isotype	IgG
Storage Instruction	Store at -20°C for up to 1 year from the date of receipt, and avoid repeat freeze-thaw cycles.

TARGET INFORMATION

Gene ID	2932 2931
Gene Symbol	GSK3B GSK3A
Uniprot ID	GSK3B_HUMAN GSK3A_HUMAN
Immunogen	The antiserum was produced against synthesized peptide derived from the human GSK3 alpha/beta at the amino acid range 246-295
Immunogen Region	246-295 aa
Specificity	GSK3 Alpha/Beta Polyclonal Antibody detects endogenous levels of GSK3 Alpha/Beta protein.
Immunogen Sequence	



This product is suitable for in-vitro studies under the RESEARCH USE ONLY [RUO] licence. This product must not be used as for diagnostic or other medical purposes.
St John's Laboratory Ltd, Knowledge Dock Business Centre, University Way, London, E16 2RD | Tel: 0208 223 3081