

Anti-CXCL3 antibody (58-107 aa) (STJ93440)

STJ93440

GENERAL INFORMATION

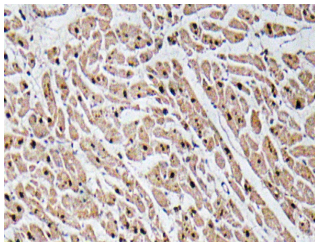
Product Type	Primary antibodies
Short Description	Rabbit polyclonal antibody anti-C-X-C motif chemokine 3 (58-107 aa) is suitable for use in Immunohistochemistry, Immunofluorescence and ELISA research applications.
Applications	IHC/IF/ELISA
Host/Source	Rabbit
Reactivity	Human/Rat/Mouse

PRODUCT PROPERTIES

Clonality	Polyclonal
Clone ID	
Concentration	1 mg/mL
Conjugation	Unconjugated
Purification	The antibody was affinity-purified from rabbit antiserum by affinity-chromatography using epitope-specific immunogen.
Dilution Range	IHC 1:100-1:300 ELISA 1:10000 IF 1:50-200
Formulation	Liquid in PBS containing 50% Glycerol, 0.5% BSA and 0.02% Sodium Azide.
Isotype	IgG
Storage Instruction	Store at -20°C for up to 1 year from the date of receipt, and avoid repeat freeze-thaw cycles.

TARGET INFORMATION

Gene ID	2921
Gene Symbol	CXCL3
Uniprot ID	CXCL3_HUMAN
Immunogen	The antiserum was produced against synthesized peptide derived from the human GROgamma at the amino acid range 58-107
Immunogen Region	58-107 aa
Specificity	GRO Gamma Polyclonal Antibody detects endogenous levels of GRO Gamma protein.
Immunogen Sequence	



Immunohistochemistry analysis of GRO Alpha antibody in paraffin-embedded human heart tissue.