

Anti-GRB10 antibody (33-82 aa) (STJ93419)

STJ93419

GENERAL INFORMATION

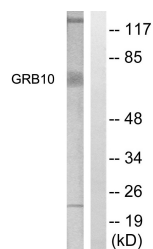
Product Type	Primary antibodies
Short Description	Rabbit polyclonal antibody anti-Growth factor receptor-bound protein 10 (33-82 aa) is suitable for use in Western Blot, Immunohistochemistry, Immunofluorescence and ELISA research applications.
Applications	WB/IHC/IF/ELISA
Host/Source	Rabbit
Reactivity	Human/Rat/Mouse

PRODUCT PROPERTIES

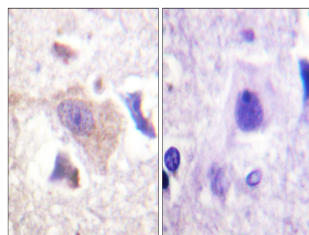
Clonality	Polyclonal
Clone ID	
Concentration	1 mg/mL
Conjugation	Unconjugated
Purification	The antibody was affinity-purified from rabbit antiserum by affinity-chromatography using epitope-specific immunogen.
Dilution	WB 1:500-1:2000
Range	IHC 1:100-1:300 IF 1:200-1:1000 ELISA 1:5000
Formulation	Liquid in PBS containing 50% Glycerol, 0.5% BSA and 0.02% Sodium Azide.
Isotype	IgG
Storage Instruction	Store at -20°C for up to 1 year from the date of receipt, and avoid repeat freeze-thaw cycles.

TARGET INFORMATION

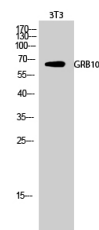
Gene ID	2887
Gene Symbol	GRB10
Uniprot ID	GRB10_HUMAN
Immunogen	The antiserum was produced against synthesized peptide derived from the human GRB10 at the amino acid range 33-82
Immunogen Region	33-82 aa
Specificity	GRB10 Polyclonal Antibody detects endogenous levels of GRB10 protein.
Immunogen Sequence	



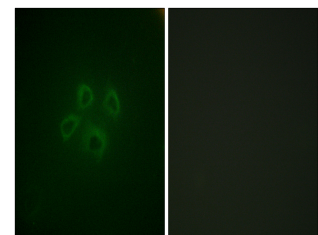
Western blot analysis of lysates from NIH/3T3 cells, treated with Insulin 0.01U/ml 15', using GRB10 Antibody. The lane on the right is blocked with the synthesized peptide.



Immunohistochemistry analysis of paraffin-embedded human brain tissue, using GRB10 Antibody. The picture on the right is blocked with the synthesized peptide.



Western blot analysis of 3T3 cells using GRB10 Polyclonal Antibody diluted at 1:4 2000



Immunofluorescence analysis of HepG2 cells, using GRB10 Antibody. The picture on the right is blocked with the synthesized peptide.

This product is suitable for in-vitro studies under the RESEARCH USE ONLY [RUO] licence. This product must not be used as for diagnostic or other medical purposes.
St John's Laboratory Ltd, Knowledge Dock Business Centre, University Way, London, E16 2RD | Tel: 0208 223 3081