

Anti-GPS2 antibody (11-60 aa) (STJ93406)

STJ93406

GENERAL INFORMATION

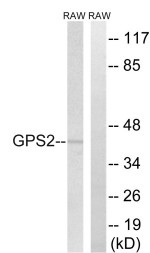
Product Type	Primary antibodies
Short Description	Rabbit polyclonal antibody anti-G protein pathway suppressor 2 (11-60 aa) is suitable for use in Western Blot and ELISA research applications.
Applications	WB/ELISA
Host/Source	Rabbit
Reactivity	Human/Mouse/Rat

PRODUCT PROPERTIES

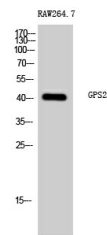
Clonality	Polyclonal
Clone ID	
Concentration	1 mg/mL
Conjugation	Unconjugated
Purification	The antibody was affinity-purified from rabbit antiserum by affinity-chromatography using epitope-specific immunogen.
Dilution Range	WB 1:500-1:2000 ELISA 1:40000
Formulation	Liquid in PBS containing 50% Glycerol, 0.5% BSA and 0.02% Sodium Azide.
Isotype	IgG
Storage Instruction	Store at -20°C for up to 1 year from the date of receipt, and avoid repeat freeze-thaw cycles.

TARGET INFORMATION

Gene ID	2874
Gene Symbol	GPS2
Uniprot ID	GPS2_HUMAN
Immunogen	The antiserum was produced against synthesized peptide derived from the human GPS2 at the amino acid range 11-60
Immunogen Region	11-60 aa
Specificity	GPS2 Polyclonal Antibody detects endogenous levels of GPS2 protein.
Immunogen Sequence	



Western blot analysis of lysates from RAW264.7 cells, using GPS2 Antibody. The lane on the right is blocked with the synthesized peptide.



Western blot analysis of RAW264.7 cells using GPS2 Polyclonal Antibody cells nucleus extracted by Minute TM Cytoplasmic and Nuclear Fractionation kit (SC-003, Inventoriatech, MN, USA).

This product is suitable for in-vitro studies under the RESEARCH USE ONLY [RUO] licence. This product must not be used as for diagnostic or other medical purposes.
St John's Laboratory Ltd, Knowledge Dock Business Centre, University Way, London, E16 2RD | Tel: 0208 223 3081