

Anti-GPR87 antibody (221-270 aa) (STJ93399)

STJ93399

GENERAL INFORMATION

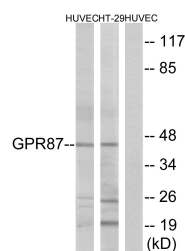
Product Type	Primary antibodies
Short Description	Rabbit polyclonal antibody anti-G-protein coupled receptor 87 (221-270 aa) is suitable for use in Western Blot, Immunofluorescence and ELISA research applications.
Applications	WB/IF/ELISA
Host/Source	Rabbit
Reactivity	Human/Mouse

PRODUCT PROPERTIES

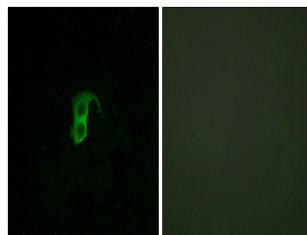
Clonality	Polyclonal
Clone ID	
Concentration	1 mg/mL
Conjugation	Unconjugated
Purification	The antibody was affinity-purified from rabbit antiserum by affinity-chromatography using epitope-specific immunogen.
Dilution Range	WB 1:500-1:2000 IF 1:200-1:1000 ELISA 1:5000
Formulation	Liquid in PBS containing 50% Glycerol, 0.5% BSA and 0.02% Sodium Azide.
Isotype	IgG
Storage Instruction	Store at -20°C for up to 1 year from the date of receipt, and avoid repeat freeze-thaw cycles.

TARGET INFORMATION

Gene ID	53836
Gene Symbol	GPR87
Uniprot ID	GPR87_HUMAN
Immunogen	The antiserum was produced against synthesized peptide derived from the human GPR87 at the amino acid range 221-270
Immunogen Region	221-270 aa
Specificity	GPR87 Polyclonal Antibody detects endogenous levels of GPR87 protein.
Immunogen Sequence	



Western blot analysis of lysates from HUVEC and HT-29 cells, using GPR87 Antibody. The lane on the right is blocked with the synthesized peptide.



Immunofluorescence analysis of HUVEC cells, using GPR87 Antibody. The picture on the right is blocked with the synthesized peptide.