

Anti-GPR68 antibody (281-330 aa) (STJ93394)

STJ93394

GENERAL INFORMATION

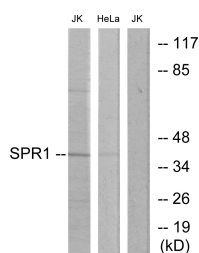
Product Type	Primary antibodies
Short Description	Rabbit polyclonal antibody anti-Ovarian cancer G-protein coupled receptor 1 (281-330 aa) is suitable for use in Western Blot, Immunofluorescence and ELISA research applications.
Applications	WB/IF/ELISA
Host/Source	Rabbit
Reactivity	Human/Mouse

PRODUCT PROPERTIES

Clonality	Polyclonal
Clone ID	
Concentration	1 mg/mL
Conjugation	Unconjugated
Purification	The antibody was affinity-purified from rabbit antiserum by affinity-chromatography using epitope-specific immunogen.
Dilution Range	WB 1:500-1:2000 IF 1:200-1:1000 ELISA 1:5000
Formulation	Liquid in PBS containing 50% Glycerol, 0.5% BSA and 0.02% Sodium Azide.
Isotype	IgG
Storage Instruction	Store at -20°C for up to 1 year from the date of receipt, and avoid repeat freeze-thaw cycles.

TARGET INFORMATION

Gene ID	8111
Gene Symbol	GPR68
Uniprot ID	OGR1_HUMAN
Immunogen	The antiserum was produced against synthesized peptide derived from the human SPR1 at the amino acid range 281-330
Immunogen Region	281-330 aa
Specificity	GPR68 Polyclonal Antibody detects endogenous levels of GPR68 protein.
Immunogen Sequence	



Western blot analysis of lysates from Jurkat and HeLa cells, using SPR1 Antibody. The lane on the right is blocked with the synthesized peptide.