

Anti-GPR50 antibody (301-350 aa) (STJ93389)

STJ93389

GENERAL INFORMATION

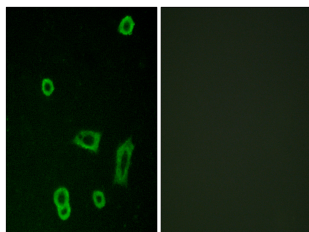
Product Type	Primary antibodies
Short Description	Rabbit polyclonal antibody anti-Melatonin-related receptor (301-350 aa) is suitable for use in Western Blot, Immunofluorescence and ELISA research applications.
Applications	WB/IF/ELISA
Host/Source	Rabbit
Reactivity	Human/Rat/Mouse

PRODUCT PROPERTIES

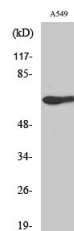
Clonality	Polyclonal
Clone ID	
Concentration	1 mg/mL
Conjugation	Unconjugated
Purification	The antibody was affinity-purified from rabbit antiserum by affinity-chromatography using epitope-specific immunogen.
Dilution Range	WB 1:500-1:2000 IF 1:200-1:1000 ELISA 1:10000
Formulation	Liquid in PBS containing 50% Glycerol, 0.5% BSA and 0.02% Sodium Azide.
Isotype	IgG
Storage Instruction	Store at -20°C for up to 1 year from the date of receipt, and avoid repeat freeze-thaw cycles.

TARGET INFORMATION

Gene ID	9248
Gene Symbol	GPR50
Uniprot ID	MTR1L_HUMAN
Immunogen	The antiserum was produced against synthesized peptide derived from the human MTR1L at the amino acid range 301-350
Immunogen Region	301-350 aa
Specificity	GPR50 Polyclonal Antibody detects endogenous levels of GPR50 protein.
Immunogen Sequence	



Immunofluorescence analysis of LOVO cells, using MTR1L Antibody. The picture on the right is blocked with the synthesized peptide.



Western blot analysis of various cells using GPR50 Polyclonal Antibody diluted at 1/4 1000

This product is suitable for in-vitro studies under the RESEARCH USE ONLY [RUO] licence. This product must not be used as for diagnostic or other medical purposes.
St John's Laboratory Ltd, Knowledge Dock Business Centre, University Way, London, E16 2RD | Tel: 0208 223 3081