

Anti-GPR180 antibody (241-290 aa) (STJ93371)

STJ93371

GENERAL INFORMATION

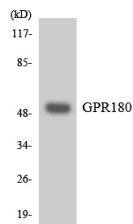
Product Type	Primary antibodies
Short Description	Rabbit polyclonal antibody anti-Integral membrane protein GPR180 (241-290 aa) is suitable for use in Western Blot, Immunohistochemistry, Immunofluorescence and ELISA research applications.
Applications	WB/IHC/IF/ELISA
Host/Source	Rabbit
Reactivity	Human/Mouse

PRODUCT PROPERTIES

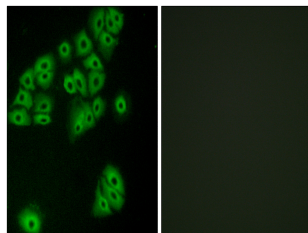
Clonality	Polyclonal
Clone ID	
Concentration	1 mg/mL
Conjugation	Unconjugated
Purification	The antibody was affinity-purified from rabbit antiserum by affinity-chromatography using epitope-specific immunogen.
Dilution Range	WB 1:500-1:2000 IHC 1:100-1:300 IF 1:200-1:1000 ELISA 1:10000
Formulation	Liquid in PBS containing 50% Glycerol, 0.5% BSA and 0.02% Sodium Azide.
Isotype	IgG
Storage Instruction	Store at -20°C for up to 1 year from the date of receipt, and avoid repeat freeze-thaw cycles.

TARGET INFORMATION

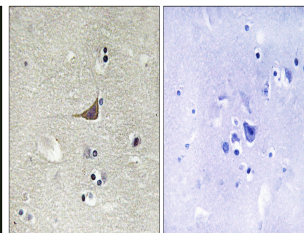
Gene ID	160897
Gene Symbol	GPR180
Uniprot ID	GP180_HUMAN
Immunogen	The antiserum was produced against synthesized peptide derived from the human GPR180 at the amino acid range 241-290
Immunogen Region	241-290 aa
Specificity	GPR180 Polyclonal Antibody detects endogenous levels of GPR180 protein.
Immunogen Sequence	



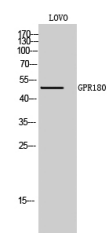
Western blot analysis of the lysates from Jurkat cells using GPR180 antibody.



Immunofluorescence analysis of A549 cells, using GPR180 Antibody. The picture on the right is blocked with the synthesized peptide.



Immunohistochemistry analysis of paraffin-embedded human brain tissue, using GPR180 Antibody. The picture on the right is blocked with the synthesized peptide.



Western blot analysis of LOVO cells using GPR180 Polyclonal Antibody