

Anti-GPR176 antibody (466-515 aa) (STJ93368)

STJ93368

GENERAL INFORMATION

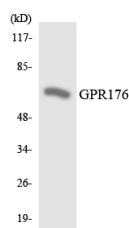
Product Type	Primary antibodies
Short Description	Rabbit polyclonal antibody anti-G-protein coupled receptor 176 (466-515 aa) is suitable for use in Western Blot, Immunofluorescence and ELISA research applications.
Applications	WB/IF/ELISA
Host/Source	Rabbit
Reactivity	Human/Mouse/Rat

PRODUCT PROPERTIES

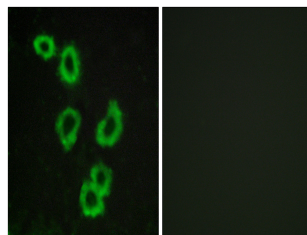
Clonality	Polyclonal
Clone ID	
Concentration	1 mg/mL
Conjugation	Unconjugated
Purification	The antibody was affinity-purified from rabbit antiserum by affinity-chromatography using epitope-specific immunogen.
Dilution Range	WB 1:500-1:2000 IF 1:200-1:1000 ELISA 1:10000
Formulation	Liquid in PBS containing 50% Glycerol, 0.5% BSA and 0.02% Sodium Azide.
Isotype	IgG
Storage Instruction	Store at -20°C for up to 1 year from the date of receipt, and avoid repeat freeze-thaw cycles.

TARGET INFORMATION

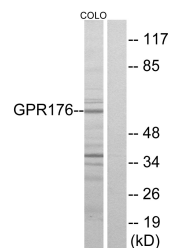
Gene ID	11245
Gene Symbol	GPR176
Uniprot ID	GP176_HUMAN
Immunogen	The antiserum was produced against synthesized peptide derived from the human GPR176 at the amino acid range 466-515
Immunogen Region	466-515 aa
Specificity	GPR176 Polyclonal Antibody detects endogenous levels of GPR176 protein.
Immunogen Sequence	



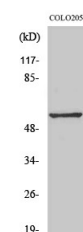
Western blot analysis of the lysates from HeLa cells using GPR176 antibody.



Immunofluorescence analysis of MCF7 cells, using GPR176 Antibody. The picture on the right is blocked with the synthesized peptide.



Western blot analysis of lysates from COLO205 cells, using GPR176 Antibody. The lane on the right is blocked with the synthesized peptide.



Western blot analysis of various cells using GPR176 Polyclonal Antibody