

Anti-GPR171 antibody (181-230 aa) (STJ93358)

STJ93358

GENERAL INFORMATION

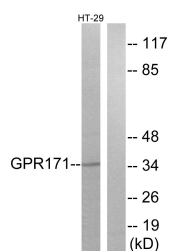
Product Type	Primary antibodies
Short Description	Rabbit polyclonal antibody anti-G-protein coupled receptor 171 (181-230 aa) is suitable for use in Western Blot, Immunofluorescence and ELISA research applications.
Applications	WB/IF/ELISA
Host/Source	Rabbit
Reactivity	Human/Rat/Mouse

PRODUCT PROPERTIES

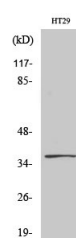
Clonality	Polyclonal
Clone ID	
Concentration	1 mg/mL
Conjugation	Unconjugated
Purification	The antibody was affinity-purified from rabbit antiserum by affinity-chromatography using epitope-specific immunogen.
Dilution Range	WB 1:500-1:2000 IF 1:200-1:1000 ELISA 1:10000
Formulation	Liquid in PBS containing 50% Glycerol, 0.5% BSA and 0.02% Sodium Azide.
Isotype	IgG
Storage Instruction	Store at -20°C for up to 1 year from the date of receipt, and avoid repeat freeze-thaw cycles.

TARGET INFORMATION

Gene ID	29909
Gene Symbol	GPR171
Uniprot ID	GP171_HUMAN
Immunogen	The antiserum was produced against synthesized peptide derived from the human GPR171 at the amino acid range 181-230
Immunogen Region	181-230 aa
Specificity	GPR171 Polyclonal Antibody detects endogenous levels of GPR171 protein.
Immunogen Sequence	



Western blot analysis of lysates from HT-29 cells, using GPR171 Antibody. The lane on the right is blocked with the synthesized peptide.



Western blot analysis of various cells using GPR171 Polyclonal Antibody

This product is suitable for in-vitro studies under the RESEARCH USE ONLY [RUO] licence. This product must not be used as for diagnostic or other medical purposes.
St John's Laboratory Ltd, Knowledge Dock Business Centre, University Way, London, E16 2RD | Tel: 0208 223 3081