

Anti-GPR160 antibody (289-338 aa) (STJ93355)

STJ93355

GENERAL INFORMATION

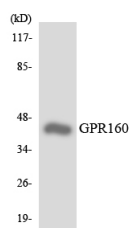
Product Type	Primary antibodies
Short Description	Rabbit polyclonal antibody anti-Probable G-protein coupled receptor 160 (289-338 aa) is suitable for use in Western Blot, Immunohistochemistry, Immunofluorescence and ELISA research applications.
Applications	WB/IHC/IF/ELISA
Host/Source	Rabbit
Reactivity	Human/Rat/Mouse

PRODUCT PROPERTIES

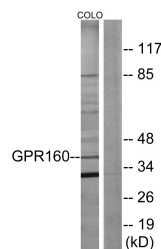
Clonality	Polyclonal
Clone ID	
Concentration	1 mg/mL
Conjugation	Unconjugated
Purification	The antibody was affinity-purified from rabbit antiserum by affinity-chromatography using epitope-specific immunogen.
Dilution	WB 1:500-1:2000
Range	IHC 1:100-1:300 IF 1:200-1:1000 ELISA 1:10000
Formulation	Liquid in PBS containing 50% Glycerol, 0.5% BSA and 0.02% Sodium Azide.
Isotype	IgG
Storage	Store at -20°C for up to 1 year from the date of receipt, and avoid repeat freeze-thaw cycles.
Instruction	

TARGET INFORMATION

Gene ID	26996
Gene Symbol	GPR160
Uniprot ID	GP160_HUMAN
Immunogen	The antiserum was produced against synthesized peptide derived from the human GPR160 at the amino acid range 289-338
Immunogen Region	289-338 aa
Specificity	GPR160 Polyclonal Antibody detects endogenous levels of GPR160 protein.
Immunogen Sequence	



Western blot analysis of the lysates from HUVEC cells using GPR160 antibody.



Western blot analysis of lysates from COLO205 cells, using GPR160 Antibody. The lane on the right is blocked with the synthesized peptide.

This product is suitable for in-vitro studies under the RESEARCH USE ONLY [RUO] licence. This product must not be used as for diagnostic or other medical purposes.
St John's Laboratory Ltd, Knowledge Dock Business Centre, University Way, London, E16 2RD | Tel: 0208 223 3081