

Anti-GPR158 antibody (1-50 aa) (STJ93354)

STJ93354

GENERAL INFORMATION

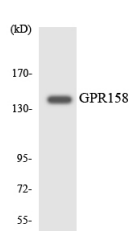
Product Type	Primary antibodies
Short Description	Rabbit polyclonal antibody anti-Metabotropic glycine receptor (1-50 aa) is suitable for use in Western Blot, Immunohistochemistry, Immunofluorescence and ELISA research applications.
Applications	WB/IHC/IF/ELISA
Host/Source	Rabbit
Reactivity	Human/Mouse

PRODUCT PROPERTIES

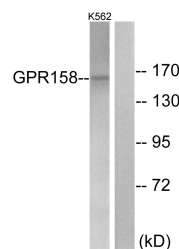
Clonality	Polyclonal
Clone ID	
Concentration	1 mg/mL
Conjugation	Unconjugated
Purification	The antibody was affinity-purified from rabbit antiserum by affinity-chromatography using epitope-specific immunogen.
Dilution Range	WB 1:500-1:2000 IHC 1:100-1:300 IF 1:200-1:1000 ELISA 1:5000
Formulation	Liquid in PBS containing 50% Glycerol, 0.5% BSA and 0.02% Sodium Azide.
Isotype	IgG
Storage Instruction	Store at -20°C for up to 1 year from the date of receipt, and avoid repeat freeze-thaw cycles.

TARGET INFORMATION

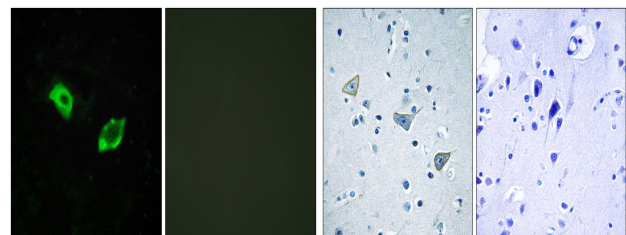
Gene ID	57512
Gene Symbol	GPR158
Uniprot ID	MGLYR_HUMAN
Immunogen	The antiserum was produced against synthesized peptide derived from the human GPR158 at the amino acid range 1-50
Immunogen Region	1-50 aa
Specificity	GPR158 Polyclonal Antibody detects endogenous levels of GPR158 protein.
Immunogen Sequence	



Western blot analysis of the lysates from HeLa cells using GPR158 antibody.



Western blot analysis of lysates from K562 cells, using GPR158 Antibody. The lane on the right is blocked with the synthesized peptide.



Immunofluorescence analysis of HUVEC cells, using GPR158 Antibody. The picture on the right is blocked with the synthesized peptide.

Immunohistochemistry analysis of paraffin-embedded human brain tissue, using GPR158 Antibody. The picture on the right is blocked with the synthesized peptide.

This product is suitable for in-vitro studies under the RESEARCH USE ONLY [RUO] licence. This product must not be used as for diagnostic or other medical purposes.
St John's Laboratory Ltd, Knowledge Dock Business Centre, University Way, London, E16 2RD | Tel: 0208 223 3081