

Anti-GPR156 antibody (501-550 aa) (STJ93352)

STJ93352

GENERAL INFORMATION

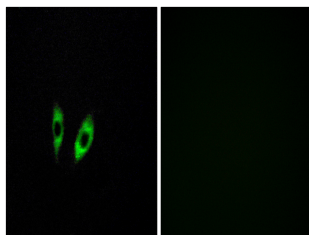
Product Type	Primary antibodies
Short Description	Rabbit polyclonal antibody anti-Probable G-protein coupled receptor 156 (501-550 aa) is suitable for use in Western Blot, Immunofluorescence and ELISA research applications.
Applications	WB/IF/ELISA
Host/Source	Rabbit
Reactivity	Human/Rat/Mouse

PRODUCT PROPERTIES

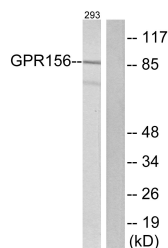
Clonality	Polyclonal
Clone ID	
Concentration	1 mg/mL
Conjugation	Unconjugated
Purification	The antibody was affinity-purified from rabbit antiserum by affinity-chromatography using epitope-specific immunogen.
Dilution Range	WB 1:500-1:2000 IF 1:200-1:1000 ELISA 1:5000
Formulation	Liquid in PBS containing 50% Glycerol, 0.5% BSA and 0.02% Sodium Azide.
Isotype	IgG
Storage Instruction	Store at -20°C for up to 1 year from the date of receipt, and avoid repeat freeze-thaw cycles.

TARGET INFORMATION

Gene ID	165829
Gene Symbol	GPR156
Uniprot ID	GP156_HUMAN
Immunogen	The antiserum was produced against synthesized peptide derived from the human GPR156 at the amino acid range 501-550
Immunogen Region	501-550 aa
Specificity	GPR156 Polyclonal Antibody detects endogenous levels of GPR156 protein.
Immunogen Sequence	



Immunofluorescence analysis of HeLa cells, using GPR156 Antibody. The picture on the right is blocked with the synthesized peptide.



Western blot analysis of lysates from 293 cells, using GPR156 Antibody. The lane on the right is blocked with the synthesized peptide.



Western blot analysis of various cells using GPR156 Polyclonal Antibody