

Anti-GPR150 antibody (361-410 aa) (STJ93345)

STJ93345

GENERAL INFORMATION

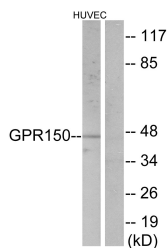
Product Type	Primary antibodies
Short Description	Rabbit polyclonal antibody anti-Probable G-protein coupled receptor 150 (361-410 aa) is suitable for use in Western Blot, Immunofluorescence and ELISA research applications.
Applications	WB/IF/ELISA
Host/Source	Rabbit
Reactivity	Human/Rat/Mouse

PRODUCT PROPERTIES

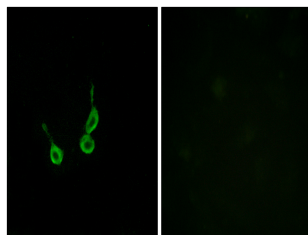
Clonality	Polyclonal
Clone ID	
Concentration	1 mg/mL
Conjugation	Unconjugated
Purification	The antibody was affinity-purified from rabbit antiserum by affinity-chromatography using epitope-specific immunogen.
Dilution Range	WB 1:500-1:2000 IF 1:200-1:1000 ELISA 1:10000
Formulation	Liquid in PBS containing 50% Glycerol, 0.5% BSA and 0.02% Sodium Azide.
Isotype	IgG
Storage Instruction	Store at -20°C for up to 1 year from the date of receipt, and avoid repeat freeze-thaw cycles.

TARGET INFORMATION

Gene ID	285601
Gene Symbol	GPR150
Uniprot ID	GP150_HUMAN
Immunogen	The antiserum was produced against synthesized peptide derived from the human GPR150 at the amino acid range 361-410
Immunogen Region	361-410 aa
Specificity	GPR150 Polyclonal Antibody detects endogenous levels of GPR150 protein.
Immunogen Sequence	



Western blot analysis of lysates from HUVEC cells, using GPR150 Antibody. The lane on the right is blocked with the synthesized peptide.



Immunofluorescence analysis of HepG2 cells, using GPR150 Antibody. The picture on the right is blocked with the synthesized peptide.