

Anti-GPR15 antibody (201-250 aa) (STJ93343)

STJ93343

GENERAL INFORMATION

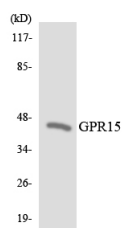
| | |
|--------------------------|---|
| Product Type | Primary antibodies |
| Short Description | Rabbit polyclonal antibody anti-G-protein coupled receptor 15 (201-250 aa) is suitable for use in Western Blot, Immunofluorescence and ELISA research applications. |
| Applications | WB/IF/ELISA |
| Host/Source | Rabbit |
| Reactivity | Human/Mouse |

PRODUCT PROPERTIES

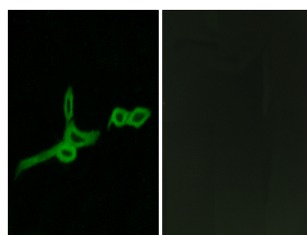
| | |
|----------------------------|---|
| Clonality | Polyclonal |
| Clone ID | |
| Concentration | 1 mg/mL |
| Conjugation | Unconjugated |
| Purification | The antibody was affinity-purified from rabbit antiserum by affinity-chromatography using epitope-specific immunogen. |
| Dilution Range | WB 1:500-1:2000 IF 1:200-1:1000 ELISA 1:10000 |
| Formulation | Liquid in PBS containing 50% Glycerol, 0.5% BSA and 0.02% Sodium Azide. |
| Isotype | IgG |
| Storage Instruction | Store at -20°C for up to 1 year from the date of receipt, and avoid repeat freeze-thaw cycles. |

TARGET INFORMATION

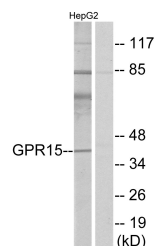
| | |
|---------------------------|---|
| Gene ID | 2838 |
| Gene Symbol | GPR15 |
| Uniprot ID | GPR15_HUMAN |
| Immunogen | The antiserum was produced against synthesized peptide derived from the human GPR15 at the amino acid range 201-250 |
| Immunogen Region | 201-250 aa |
| Specificity | GPR15 Polyclonal Antibody detects endogenous levels of GPR15 protein. |
| Immunogen Sequence | |



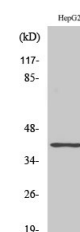
Western blot analysis of the lysates from HeLa cells using GPR15 antibody.



Immunofluorescence analysis of LOVO cells, using GPR15 Antibody. The picture on the right is blocked with the synthesized peptide.



Western blot analysis of lysates from HepG2 cells, using GPR15 Antibody. The lane on the right is blocked with the synthesized peptide.



Western blot analysis of various cells using GPR15 Polyclonal Antibody