

Anti-ADGRD2 antibody (91-140 aa) (STJ93340)

STJ93340

GENERAL INFORMATION

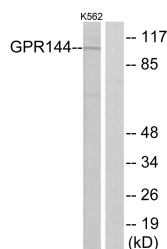
Product Type	Primary antibodies
Short Description	Rabbit polyclonal antibody anti-Adhesion G-protein coupled receptor D2 (91-140 aa) is suitable for use in Western Blot, Immunofluorescence and ELISA research applications.
Applications	WB/IF/ELISA
Host/Source	Rabbit
Reactivity	Human/Rat/Mouse

PRODUCT PROPERTIES

Clonality	Polyclonal
Clone ID	
Concentration	1 mg/mL
Conjugation	Unconjugated
Purification	The antibody was affinity-purified from rabbit antiserum by affinity-chromatography using epitope-specific immunogen.
Dilution Range	WB 1:500-1:2000 IF 1:200-1:1000 ELISA 1:5000
Formulation	Liquid in PBS containing 50% Glycerol, 0.5% BSA and 0.02% Sodium Azide.
Isotype	IgG
Storage Instruction	Store at -20°C for up to 1 year from the date of receipt, and avoid repeat freeze-thaw cycles.

TARGET INFORMATION

Gene ID	
Gene Symbol	ADGRD2
Uniprot ID	AGRD2_HUMAN
Immunogen	The antiserum was produced against synthesized peptide derived from the human GPR144 at the amino acid range 91-140
Immunogen Region	91-140 aa
Specificity	GPR144 Polyclonal Antibody detects endogenous levels of GPR144 protein.
Immunogen Sequence	



Western blot analysis of lysates from K562 cells, using GPR144 Antibody. The lane on the right is blocked with the synthesized peptide.