

## Anti-GPR139 antibody (181-230 aa) (STJ93337)

STJ93337

### GENERAL INFORMATION

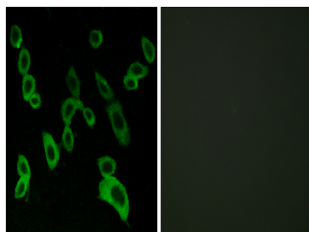
|                          |   |
|--------------------------|---|
| <b>Product Type</b>      | Primary antibodies  |
| <b>Short Description</b> | Rabbit polyclonal antibody anti-Probable G-protein coupled receptor 139-coupled orphan receptor GPRg1 (181-230 aa) is suitable for use in Western Blot, Immunofluorescence and ELISA research applications. |
| <b>Applications</b>      | WB/IF/ELISA   |
| <b>Host/Source</b>       | Rabbit  |
| <b>Reactivity</b>        | Human/Mouse/Rat   |

### PRODUCT PROPERTIES

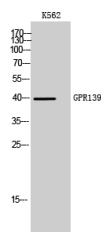
|                      |   |
|----------------------|---|
| <b>Clonality</b>     | Polyclonal  |
| <b>Clone ID</b>      |   |
| <b>Concentration</b> | 1 mg/mL   |
| <b>Conjugation</b>   | Unconjugated  |
| <b>Purification</b>  | The antibody was affinity-purified from rabbit antiserum by affinity-chromatography using epitope-specific immunogen. |
| <b>Dilution</b>      | WB 1:500-1:2000   |
| <b>Range</b>         | IF 1:200-1:1000<br>ELISA 1:5000   |
| <b>Formulation</b>   | Liquid in PBS containing 50% Glycerol, 0.5% BSA and 0.02% Sodium Azide.   |
| <b>Isotype</b>       | IgG   |
| <b>Storage</b>       | Store at -20°C for up to 1 year from the date of receipt, and avoid repeat freeze-thaw cycles.                        |
| <b>Instruction</b>   |   |

### TARGET INFORMATION

|                           |  |
|---------------------------|--|
| <b>Gene ID</b>            | 124274   |
| <b>Gene Symbol</b>        | GPR139   |
| <b>Uniprot ID</b>         | GP139_HUMAN  |
| <b>Immunogen</b>          | The antiserum was produced against synthesized peptide derived from the human GPR139 at the amino acid range 181-230 |
| <b>Immunogen Region</b>   | 181-230 aa   |
| <b>Specificity</b>        | GPR139 Polyclonal Antibody detects endogenous levels of GPR139 protein.  |
| <b>Immunogen Sequence</b> |  |



Immunofluorescence analysis of LOVO cells, using GPR139 Antibody. The picture on the right is blocked with the synthesized peptide.



Western blot analysis of K562 cells using GPR139 Polyclonal Antibody

This product is suitable for in-vitro studies under the RESEARCH USE ONLY [RUO] licence. This product must not be used as for diagnostic or other medical purposes.  
St John's Laboratory Ltd, Knowledge Dock Business Centre, University Way, London, E16 2RD | Tel: 0208 223 3081