

Anti-ADGRA1 antibody (201-250 aa) (STJ93330)

STJ93330

GENERAL INFORMATION

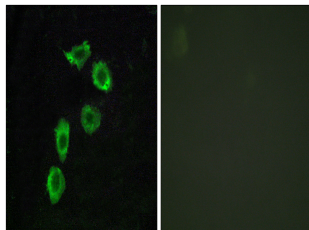
Product Type	Primary antibodies
Short Description	Rabbit polyclonal antibody anti-Adhesion G protein-coupled receptor A1 (201-250 aa) is suitable for use in Immunofluorescence and ELISA research applications.
Applications	IF/ELISA
Host/Source	Rabbit
Reactivity	Human/Rat/Mouse

PRODUCT PROPERTIES

Clonality	Polyclonal
Clone ID	
Concentration	1 mg/mL
Conjugation	Unconjugated
Purification	The antibody was affinity-purified from rabbit antiserum by affinity-chromatography using epitope-specific immunogen.
Dilution Range	IF 1:200-1:1000 ELISA 1:5000
Formulation	Liquid in PBS containing 50% Glycerol, 0.5% BSA and 0.02% Sodium Azide.
Isotype	IgG
Storage	Store at -20°C for up to 1 year from the date of receipt, and avoid repeat freeze-thaw cycles.
Instruction	

TARGET INFORMATION

Gene ID	84435
Gene Symbol	ADGRA1
Uniprot ID	AGRA1_HUMAN
Immunogen	The antiserum was produced against synthesized peptide derived from the human GPR123 at the amino acid range 201-250
Immunogen Region	201-250 aa
Specificity	GPR123 Polyclonal Antibody detects endogenous levels of GPR123 protein.
Immunogen Sequence	



Immunofluorescence analysis of HUVEC cells, using GPR123 Antibody. The picture on the right is blocked with the synthesized peptide.

This product is suitable for in-vitro studies under the RESEARCH USE ONLY [RUO] licence. This product must not be used as for diagnostic or other medical purposes.
St John's Laboratory Ltd, Knowledge Dock Business Centre, University Way, London, E16 2RD | Tel: 0208 223 3081