

## Anti-ADGRG5 antibody (91-140 aa) (STJ93322)

STJ93322

### GENERAL INFORMATION

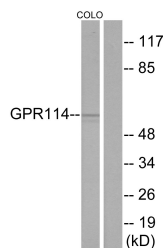
<b>Product Type</b>	Primary antibodies
<b>Short Description</b>	Rabbit polyclonal antibody anti-Adhesion G-protein coupled receptor G5 (91-140 aa) is suitable for use in Western Blot, Immunofluorescence and ELISA research applications.
<b>Applications</b>	WB/IF/ELISA
<b>Host/Source</b>	Rabbit
<b>Reactivity</b>	Human/Rat/Mouse

### PRODUCT PROPERTIES

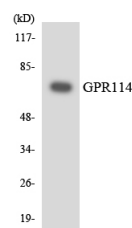
<b>Clonality</b>	Polyclonal
<b>Clone ID</b>	
<b>Concentration</b>	1 mg/mL
<b>Conjugation</b>	Unconjugated
<b>Purification</b>	The antibody was affinity-purified from rabbit antiserum by affinity-chromatography using epitope-specific immunogen.
<b>Dilution Range</b>	WB 1:500-1:2000 IF 1:200-1:1000 ELISA 1:5000
<b>Formulation</b>	Liquid in PBS containing 50% Glycerol, 0.5% BSA and 0.02% Sodium Azide.
<b>Isotype</b>	IgG
<b>Storage Instruction</b>	Store at -20°C for up to 1 year from the date of receipt, and avoid repeat freeze-thaw cycles.

### TARGET INFORMATION

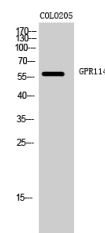
<b>Gene ID</b>	221188
<b>Gene Symbol</b>	ADGRG5
<b>Uniprot ID</b>	AGR5_HUMAN
<b>Immunogen</b>	The antiserum was produced against synthesized peptide derived from the human GPR114 at the amino acid range 91-140
<b>Immunogen Region</b>	91-140 aa
<b>Specificity</b>	GPR114 Polyclonal Antibody detects endogenous levels of GPR114 protein.
<b>Immunogen Sequence</b>	



Western blot analysis of lysates from COLO205 cells, using GPR114 Antibody. The lane on the right is blocked with the synthesized peptide.



Western blot analysis of the lysates from 293 cells using GPR114 antibody.



Western blot analysis of COLO205 cells using GPR114 Polyclonal Antibody.