

Anti-GRIA4 antibody (828-877 aa) (STJ93289)

STJ93289

GENERAL INFORMATION

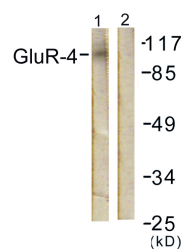
Product Type	Primary antibodies
Short Description	Rabbit polyclonal antibody anti-Glutamate receptor 4 (828-877 aa) is suitable for use in Western Blot, Immunohistochemistry, Immunofluorescence and ELISA research applications.
Applications	WB/IHC/IF/ELISA
Host/Source	Rabbit
Reactivity	Human/Mouse/Rat

PRODUCT PROPERTIES

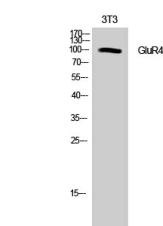
Clonality	Polyclonal
Clone ID	
Concentration	1 mg/mL
Conjugation	Unconjugated
Purification	The antibody was affinity-purified from rabbit antiserum by affinity-chromatography using epitope-specific immunogen.
Dilution Range	WB 1:500-1:2000 IHC 1:100-1:300 ELISA 1:20000 IF 1:50-200
Formulation	Liquid in PBS containing 50% Glycerol, 0.5% BSA and 0.02% Sodium Azide.
Isotype	IgG
Storage Instruction	Store at -20°C for up to 1 year from the date of receipt, and avoid repeat freeze-thaw cycles.

TARGET INFORMATION

Gene ID	2893
Gene Symbol	GRIA4
Uniprot ID	GRIA4_HUMAN
Immunogen	The antiserum was produced against synthesized peptide derived from the human GluR4 at the amino acid range 828-877
Immunogen Region	828-877 aa
Specificity	GluR4 Polyclonal Antibody detects endogenous levels of GluR4 protein.
Immunogen Sequence	



Western blot analysis of lysates from NIH/3T3 cells, treated with Forskolin 40nM 30', using GluR4 Antibody. The lane on the right is blocked with the synthesized peptide.



Western blot analysis of NIH-3T3 cells using GluR4 Polyclonal Antibody