

Anti-GCGR antibody (95-144 aa) (STJ93282)

STJ93282

GENERAL INFORMATION

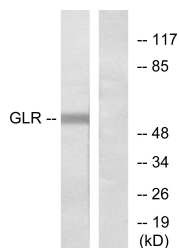
Product Type	Primary antibodies
Short Description	Rabbit polyclonal antibody anti-Glucagon receptor (95-144 aa) is suitable for use in Western Blot, Immunofluorescence and ELISA research applications.
Applications	WB/IF/ELISA
Host/Source	Rabbit
Reactivity	Human/Mouse/Rat

PRODUCT PROPERTIES

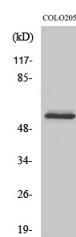
Clonality	Polyclonal
Clone ID	
Concentration	1 mg/mL
Conjugation	Unconjugated
Purification	The antibody was affinity-purified from rabbit antiserum by affinity-chromatography using epitope-specific immunogen.
Dilution Range	WB 1:500-1:2000 IF 1:200-1:1000 ELISA 1:5000
Formulation	Liquid in PBS containing 50% Glycerol, 0.5% BSA and 0.02% Sodium Azide.
Isotype	IgG
Storage	Store at -20°C for up to 1 year from the date of receipt, and avoid repeat freeze-thaw cycles.
Instruction	

TARGET INFORMATION

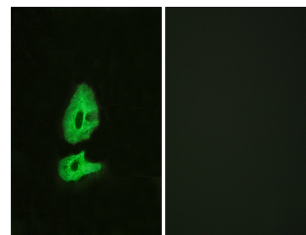
Gene ID	2642
Gene Symbol	GCGR
Uniprot ID	GLR_HUMAN
Immunogen	The antiserum was produced against synthesized peptide derived from the human GLR at the amino acid range 95-144
Immunogen Region	95-144 aa
Specificity	Glucagon Receptor Polyclonal Antibody detects endogenous levels of Glucagon Receptor protein.
Immunogen Sequence	



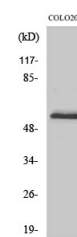
Western blot analysis of lysates from COLO205 cells, using GLR Antibody. The lane on the right is blocked with the synthesized peptide.



Western blot analysis of COLO205 cells using Glucagon Receptor Polyclonal Antibody



Immunofluorescence analysis of HeLa cells, using GLR Antibody. The picture on the right is blocked with the synthesized peptide.



Western blot analysis of various cells using Glucagon Receptor Polyclonal Antibody

This product is suitable for in-vitro studies under the RESEARCH USE ONLY [RUO] licence. This product must not be used as for diagnostic or other medical purposes.
St John's Laboratory Ltd, Knowledge Dock Business Centre, University Way, London, E16 2RD | Tel: 0208 223 3081