

Anti-MAP4K3 antibody (10-59 aa) (STJ93280)

STJ93280

GENERAL INFORMATION

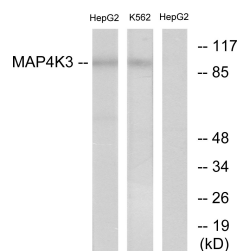
Product Type	Primary antibodies
Short Description	Rabbit polyclonal antibody anti-Mitogen-activated protein kinase kinase kinase kinase 3 (10-59 aa) is suitable for use in Western Blot and ELISA research applications.
Applications	WB/ELISA
Host/Source	Rabbit
Reactivity	Human/Mouse/Rat

PRODUCT PROPERTIES

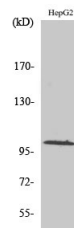
Clonality	Polyclonal
Clone ID	
Concentration	1 mg/mL
Conjugation	Unconjugated
Purification	The antibody was affinity-purified from rabbit antiserum by affinity-chromatography using epitope-specific immunogen.
Dilution Range	WB 1:500-1:2000 ELISA 1:20000
Formulation	Liquid in PBS containing 50% Glycerol, 0.5% BSA and 0.02% Sodium Azide.
Isotype	IgG
Storage	Store at -20°C for up to 1 year from the date of receipt, and avoid repeat freeze-thaw cycles.
Instruction	

TARGET INFORMATION

Gene ID	8491
Gene Symbol	MAP4K3
Uniprot ID	M4K3_HUMAN
Immunogen	The antiserum was produced against synthesized peptide derived from the human MAP4K3 at the amino acid range 10-59
Immunogen Region	10-59 aa
Specificity	GLK Polyclonal Antibody detects endogenous levels of GLK protein.
Immunogen Sequence	



Western blot analysis of lysates from HepG2 and K562 cells, using MAP4K3 Antibody. The lane on the right is blocked with the synthesized peptide.



Western blot analysis of various cells using GLK Polyclonal Antibody

This product is suitable for in-vitro studies under the RESEARCH USE ONLY [RUO] licence. This product must not be used as for diagnostic or other medical purposes.
St John's Laboratory Ltd, Knowledge Dock Business Centre, University Way, London, E16 2RD | Tel: 0208 223 3081