

Anti-GK antibody (461-510 aa) (STJ93275)

STJ93275

GENERAL INFORMATION

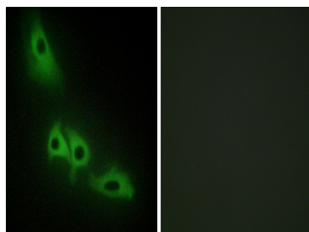
| | |
|--------------------------|---|
| Product Type | Primary antibodies |
| Short Description | Rabbit polyclonal antibody anti-Glycerol kinase (461-510 aa) is suitable for use in Western Blot, Immunofluorescence and ELISA research applications. |
| Applications | WB/IF/ELISA |
| Host/Source | Rabbit |
| Reactivity | Human/Mouse/Rat |

PRODUCT PROPERTIES

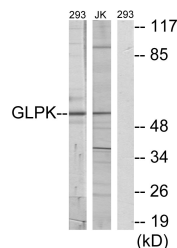
| | |
|----------------------------|---|
| Clonality | Polyclonal |
| Clone ID | |
| Concentration | 1 mg/mL |
| Conjugation | Unconjugated |
| Purification | The antibody was affinity-purified from rabbit antiserum by affinity-chromatography using epitope-specific immunogen. |
| Dilution Range | WB 1:500-1:2000 IF 1:200-1:1000 ELISA 1:20000 |
| Formulation | Liquid in PBS containing 50% Glycerol, 0.5% BSA and 0.02% Sodium Azide. |
| Isotype | IgG |
| Storage Instruction | Store at -20°C for up to 1 year from the date of receipt, and avoid repeat freeze-thaw cycles. |

TARGET INFORMATION

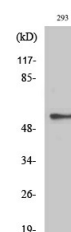
| | |
|---------------------------|--|
| Gene ID | 2710 |
| Gene Symbol | GK |
| Uniprot ID | GLPK_HUMAN |
| Immunogen | The antiserum was produced against synthesized peptide derived from the human GK at the amino acid range 461-510 |
| Immunogen Region | 461-510 aa |
| Specificity | GK1 Polyclonal Antibody detects endogenous levels of GK1 protein. |
| Immunogen Sequence | |



Immunofluorescence analysis of HeLa cells, using GK Antibody. The picture on the right is blocked with the synthesized peptide.



Western blot analysis of lysates from 293 and Jurkat cells, using GK Antibody. The lane on the right is blocked with the synthesized peptide.



Western blot analysis of various cells using GK1 Polyclonal Antibody diluted at 1:10,000