

Anti-GUCY1B1 antibody (10-59 aa) (STJ93251)

STJ93251

GENERAL INFORMATION

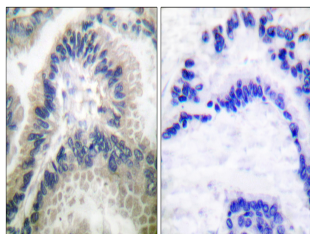
Product Type	Primary antibodies
Short Description	Rabbit polyclonal antibody anti-Guanylate cyclase soluble subunit beta-1 (10-59 aa) is suitable for use in Western Blot, Immunohistochemistry, Immunofluorescence and ELISA research applications.
Applications	WB/IHC/IF/ELISA
Host/Source	Rabbit
Reactivity	Human/Mouse/Rat

PRODUCT PROPERTIES

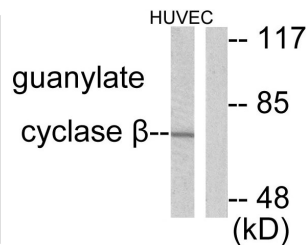
Clonality	Polyclonal
Clone ID	
Concentration	1 mg/mL
Conjugation	Unconjugated
Purification	The antibody was affinity-purified from rabbit antiserum by affinity-chromatography using epitope-specific immunogen.
Dilution	WB 1:500-1:2000
Range	IHC 1:100-1:300 ELISA 1:5000 IF 1:50-200
Formulation	Liquid in PBS containing 50% Glycerol, 0.5% BSA and 0.02% Sodium Azide.
Isotype	IgG
Storage Instruction	Store at -20°C for up to 1 year from the date of receipt, and avoid repeat freeze-thaw cycles.

TARGET INFORMATION

Gene ID	2983
Gene Symbol	GUCY1B1
Uniprot ID	GCYB1_HUMAN
Immunogen	The antiserum was produced against synthesized peptide derived from the human Guanylate Cyclase beta at the amino acid range 10-59
Immunogen Region	10-59 aa
Specificity	GCS-Beta-1 Polyclonal Antibody detects endogenous levels of GCS-Beta-1 protein.
Immunogen Sequence	



Immunohistochemistry analysis of paraffin-embedded human lung carcinoma tissue, using Guanylate Cyclase beta Antibody. The picture on the right is blocked with the synthesized peptide.



Western blot analysis of lysates from HUVEC cells, using Guanylate Cyclase beta Antibody. The lane on the right is blocked with the synthesized peptide.

