

## Anti-TUBGCP5 antibody (741-790 aa) (STJ93246)

STJ93246

### GENERAL INFORMATION

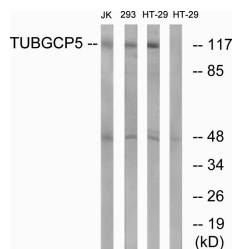
<b>Product Type</b>	Primary antibodies
<b>Short Description</b>	Rabbit polyclonal antibody anti-Gamma-tubulin complex component 5 (741-790 aa) is suitable for use in Western Blot, Immunohistochemistry, Immunofluorescence and ELISA research applications.
<b>Applications</b>	WB/IHC/IF/ELISA
<b>Host/Source</b>	Rabbit
<b>Reactivity</b>	Human/Mouse/Rat

### PRODUCT PROPERTIES

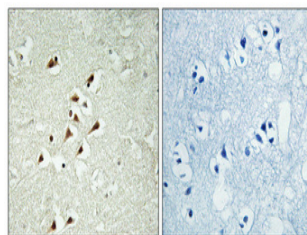
<b>Clonality</b>	Polyclonal
<b>Clone ID</b>	
<b>Concentration</b>	1 mg/mL
<b>Conjugation</b>	Unconjugated
<b>Purification</b>	The antibody was affinity-purified from rabbit antiserum by affinity-chromatography using epitope-specific immunogen.
<b>Dilution Range</b>	WB 1:500-1:2000 IHC 1:100-1:300 ELISA 1:20000 IF 1:50-200
<b>Formulation</b>	Liquid in PBS containing 50% Glycerol, 0.5% BSA and 0.02% Sodium Azide.
<b>Isotype</b>	IgG
<b>Storage Instruction</b>	Store at -20°C up to 1 year from the date of receipt, and avoid repeat freeze-thaw cycles.

### TARGET INFORMATION

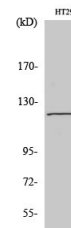
<b>Gene ID</b>	114791
<b>Gene Symbol</b>	TUBGCP5
<b>Uniprot ID</b>	GCP5_HUMAN
<b>Immunogen</b>	The antiserum was produced against synthesized peptide derived from the human TUBGCP5 at the amino acid range 741-790
<b>Immunogen Region</b>	741-790 aa
<b>Specificity</b>	GCP5 Polyclonal Antibody detects endogenous levels of GCP5 protein.
<b>Immunogen Sequence</b>	



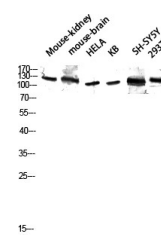
Western blot analysis of lysates from HT-29, Jurkat, and 293 cells, using TUBGCP5 Antibody. The lane on the right is blocked with the synthesized peptide.



Immunohistochemical analysis of paraffin-embedded Human brain. Antibody was diluted at 1:100 (44°C overnight). High-pressure and temperature Tris-EDTA, pH8.0 was used for antigen retrieval. Negative control (right) obtained from antibody was pre-absorbed by immunogen peptide.



Western blot analysis of 293 cells using GCP5 Polyclonal Antibody diluted at 1:10,000



Western blot analysis of Mouse-kidney mouse-brain HELA KB SH-SY5Y 293T lysis using GCP5 antibody. Antibody was diluted at 1:2000

This product is suitable for in-vitro studies under the RESEARCH USE ONLY [RUO] licence. This product must not be used as for diagnostic or other medical purposes.  
St John's Laboratory Ltd, Knowledge Dock Business Centre, University Way, London, E16 2RD | Tel: 0208 223 3081