

Anti-GCNT3 antibody (226-275 aa) (STJ93241)

STJ93241

GENERAL INFORMATION

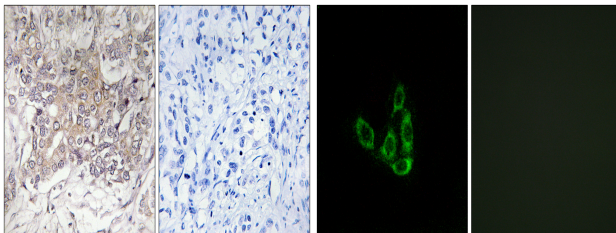
Product Type	Primary antibodies
Short Description	Rabbit polyclonal antibody anti-Beta-1, 3-galactosyl-O-glycosyl-glycoprotein beta-1, 6-N-acetylglucosaminyltransferase 3 (226-275 aa) is suitable for use in Immunohistochemistry, Immunofluorescence and ELISA research applications.
Applications	IHC/IF/ELISA
Host/Source	Rabbit
Reactivity	Human/Rat/Mouse

PRODUCT PROPERTIES

Clonality	Polyclonal
Clone ID	
Concentration	1 mg/mL
Conjugation	Unconjugated
Purification	The antibody was affinity-purified from rabbit antiserum by affinity-chromatography using epitope-specific immunogen.
Dilution	IHC 1:100-1:300
Range	IF 1:200-1:1000 ELISA 1:20000
Formulation	Liquid in PBS containing 50% Glycerol, 0.5% BSA and 0.02% Sodium Azide.
Isotype	IgG
Storage	Store at -20°C for up to 1 year from the date of receipt, and avoid repeat freeze-thaw cycles.
Instruction	

TARGET INFORMATION

Gene ID	9245
Gene Symbol	GCNT3
Uniprot ID	GCNT3_HUMAN
Immunogen	The antiserum was produced against synthesized peptide derived from the human GCNT3 at the amino acid range 226-275
Immunogen Region	226-275 aa
Specificity	GCNT3 Polyclonal Antibody detects endogenous levels of GCNT3 protein.
Immunogen Sequence	



Immunohistochemistry analysis of paraffin-embedded human liver carcinoma tissue, using GCNT3 Antibody. The picture on the right is blocked with the synthesized peptide.

Immunofluorescence analysis of A549 cells, using GCNT3 Antibody. The picture on the right is blocked with the synthesized peptide.