

## Anti-GAS8 antibody (Internal) (STJ93219)

STJ93219

### GENERAL INFORMATION

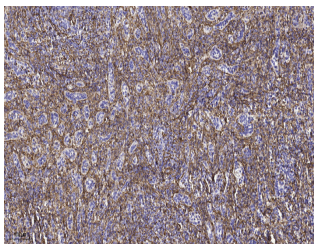
<b>Product Type</b>	Primary antibodies
<b>Short Description</b>	Rabbit polyclonal antibody anti-Dynein regulatory complex subunit 4 (Internal) is suitable for use in Immunohistochemistry, Immunofluorescence, Western Blot and ELISA research applications.
<b>Applications</b>	IHC/IF/WB/ELISA
<b>Host/Source</b>	Rabbit
<b>Reactivity</b>	Human/Mouse/Rat

### PRODUCT PROPERTIES

<b>Clonality</b>	Polyclonal
<b>Clone ID</b>	
<b>Concentration</b>	1 mg/mL
<b>Conjugation</b>	Unconjugated
<b>Purification</b>	The antibody was affinity-purified from rabbit antiserum by affinity-chromatography using epitope-specific immunogen.
<b>Dilution Range</b>	WB 1:500-2000 IHC 1:100-1:300 ELISA 1:40000 IF 1:50-200
<b>Formulation</b>	Liquid in PBS containing 50% Glycerol, 0.5% BSA and 0.02% Sodium Azide.
<b>Isotype</b>	IgG
<b>Storage</b>	Store at -20°C for up to 1 year from the date of receipt, and avoid repeat freeze-thaw cycles.
<b>Instruction</b>	

### TARGET INFORMATION

<b>Gene ID</b>	2622
<b>Gene Symbol</b>	GAS8
<b>Uniprot ID</b>	DRC4_HUMAN
<b>Immunogen</b>	Synthesized peptide derived from the Internal region of human Gas8.
<b>Immunogen Region</b>	Internal
<b>Specificity</b>	Gas8 Polyclonal Antibody detects endogenous levels of Gas8 protein.
<b>Immunogen Sequence</b>	



Immunohistochemical analysis of paraffin-embedded human spleen tissue. 1. primary Antibody was diluted at 1:200 (4A°C overnight). 2. Sodium citrate pH 6.0 was used for antigen retrieval (-98A°C, 20min). 3. Secondary antibody was diluted at 1:200