

Anti-RASA3 antibody (247-296 aa) (STJ93213)

STJ93213

GENERAL INFORMATION

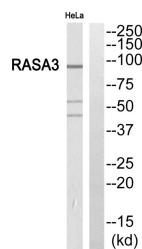
| | |
|--------------------------|---|
| Product Type | Primary antibodies |
| Short Description | Rabbit polyclonal antibody anti-Ras GTPase-activating protein 3 (247-296 aa) is suitable for use in Western Blot and ELISA research applications. |
| Applications | WB/ELISA |
| Host/Source | Rabbit |
| Reactivity | Human/Mouse/Rat |

PRODUCT PROPERTIES

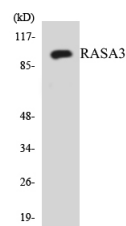
| | |
|----------------------------|---|
| Clonality | Polyclonal |
| Clone ID | |
| Concentration | 1 mg/mL |
| Conjugation | Unconjugated |
| Purification | The antibody was affinity-purified from rabbit antiserum by affinity-chromatography using epitope-specific immunogen. |
| Dilution Range | WB 1:500-1:2000 ELISA 1:40000 |
| Formulation | Liquid in PBS containing 50% Glycerol, 0.5% BSA and 0.02% Sodium Azide. |
| Isotype | IgG |
| Storage Instruction | Store at -20°C for up to 1 year from the date of receipt, and avoid repeat freeze-thaw cycles. |

TARGET INFORMATION

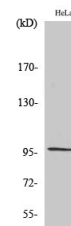
| | |
|---------------------------|---|
| Gene ID | 22821 |
| Gene Symbol | RASA3 |
| Uniprot ID | RASA3_HUMAN |
| Immunogen | The antiserum was produced against synthesized peptide derived from the human RASA3 at the amino acid range 247-296 |
| Immunogen Region | 247-296 aa |
| Specificity | GAP1-InsP4 BP Polyclonal Antibody detects endogenous levels of GAP1-InsP4 BP protein. |
| Immunogen Sequence | |



Western blot analysis of RASA3 Antibody. The lane on the right is blocked with the RASA3 peptide.



Western blot analysis of the lysates from HUVEC cells using RASA3 antibody.



Western blot analysis of various cells using GAP1-InsP4 BP Polyclonal Antibody.

This product is suitable for in-vitro studies under the RESEARCH USE ONLY [RUO] licence. This product must not be used as for diagnostic or other medical purposes.
St John's Laboratory Ltd, Knowledge Dock Business Centre, University Way, London, E16 2RD | Tel: 0208 223 3081