

## Anti-LGALS4 antibody (61-110 aa) (STJ93203)

STJ93203

### GENERAL INFORMATION

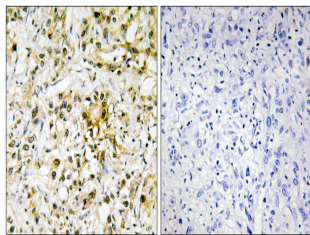
<b>Product Type</b>	Primary antibodies
<b>Short Description</b>	Rabbit polyclonal antibody anti-Galectin-4 (61-110 aa) is suitable for use in Western Blot, Immunohistochemistry, Immunofluorescence and ELISA research applications.
<b>Applications</b>	WB/IHC/IF/ELISA
<b>Host/Source</b>	Rabbit
<b>Reactivity</b>	Human/Rat/Mouse

### PRODUCT PROPERTIES

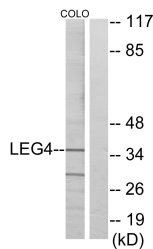
<b>Clonality</b>	Polyclonal
<b>Clone ID</b>	
<b>Concentration</b>	1 mg/mL
<b>Conjugation</b>	Unconjugated
<b>Purification</b>	The antibody was affinity-purified from rabbit antiserum by affinity-chromatography using epitope-specific immunogen.
<b>Dilution Range</b>	WB 1:500-1:2000 IHC 1:100-1:300 ELISA 1:20000 IF 1:50-200
<b>Formulation</b>	Liquid in PBS containing 50% Glycerol, 0.5% BSA and 0.02% Sodium Azide.
<b>Isotype</b>	IgG
<b>Storage Instruction</b>	Store at -20°C for up to 1 year from the date of receipt, and avoid repeat freeze-thaw cycles.

### TARGET INFORMATION

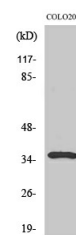
<b>Gene ID</b>	3960
<b>Gene Symbol</b>	LGALS4
<b>Uniprot ID</b>	LEG4_HUMAN
<b>Immunogen</b>	The antiserum was produced against synthesized peptide derived from the human LEG4 at the amino acid range 61-110
<b>Immunogen Region</b>	61-110 aa
<b>Specificity</b>	Galectin-4 Polyclonal Antibody detects endogenous levels of Galectin-4 protein.
<b>Immunogen Sequence</b>	



Immunohistochemistry analysis of paraffin-embedded human liver carcinoma tissue, using LEG4 Antibody. The picture on the right is blocked with the synthesized peptide.



Western blot analysis of lysates from COLO cells, using LEG4 Antibody. The lane on the right is blocked with the synthesized peptide.



Western blot analysis of various cells using Galectin-4 Polyclonal Antibody