

Anti-GAD1 antibody (471-520 aa) (STJ93196)

STJ93196

GENERAL INFORMATION

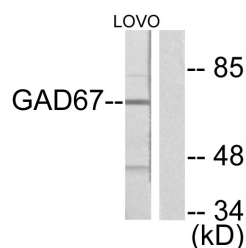
Product Type	Primary antibodies
Short Description	Rabbit polyclonal antibody anti-Glutamate decarboxylase 1 (471-520 aa) is suitable for use in Western Blot, Immunohistochemistry, Immunofluorescence and ELISA research applications.
Applications	WB/IHC/IF/ELISA
Host/Source	Rabbit
Reactivity	Human/Mouse/Rat

PRODUCT PROPERTIES

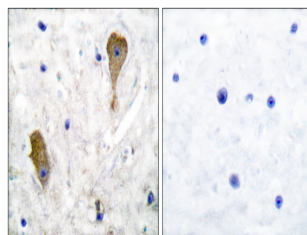
Clonality	Polyclonal
Clone ID	
Concentration	1 mg/mL
Conjugation	Unconjugated
Purification	The antibody was affinity-purified from rabbit antiserum by affinity-chromatography using epitope-specific immunogen.
Dilution Range	WB 1:500-1:2000 IHC 1:100-1:300 ELISA 1:10000 IF 1:50-200
Formulation	Liquid in PBS containing 50% Glycerol, 0.5% BSA and 0.02% Sodium Azide.
Isotype	IgG
Storage Instruction	Store at -20°C for up to 1 year from the date of receipt, and avoid repeat freeze-thaw cycles.

TARGET INFORMATION

Gene ID	2571
Gene Symbol	GAD1
Uniprot ID	DCE1_HUMAN
Immunogen	The antiserum was produced against synthesized peptide derived from the human GAD1 at the amino acid range 471-520
Immunogen Region	471-520 aa
Specificity	GAD67 Polyclonal Antibody detects endogenous levels of GAD67 protein.
Immunogen Sequence	



Western blot analysis of lysates from LOVO cells, using GAD1 Antibody. The lane on the right is blocked with the synthesized peptide.



Immunohistochemistry analysis of paraffin-embedded human brain tissue, using GAD1 Antibody. The picture on the right is blocked with the synthesized peptide.