

Anti-GABRA6 antibody (61-110 aa) (STJ93188)

STJ93188

GENERAL INFORMATION

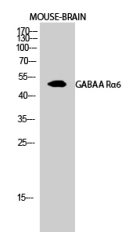
Product Type	Primary antibodies
Short Description	Rabbit polyclonal antibody anti-Gamma-aminobutyric acid receptor subunit alpha-6 receptor subunit alpha-6 (61-110 aa) is suitable for use in Western Blot and ELISA research applications.
Applications	WB/ELISA
Host/Source	Rabbit
Reactivity	Human/Mouse/Rat

PRODUCT PROPERTIES

Clonality	Polyclonal
Clone ID	
Concentration	1 mg/mL
Conjugation	Unconjugated
Purification	The antibody was affinity-purified from rabbit antiserum by affinity-chromatography using epitope-specific immunogen.
Dilution Range	WB 1:500-1:2000 ELISA 1:40000
Formulation	Liquid in PBS containing 50% Glycerol, 0.5% BSA and 0.02% Sodium Azide.
Isotype	IgG
Storage	Store at -20°C for up to 1 year from the date of receipt, and avoid repeat freeze-thaw cycles.
Instruction	

TARGET INFORMATION

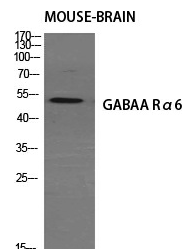
Gene ID	2559
Gene Symbol	GABRA6
Uniprot ID	GBRA6_HUMAN
Immunogen	The antiserum was produced against synthesized peptide derived from the human GABRA6 at the amino acid range 61-110
Immunogen Region	61-110 aa
Specificity	GABAA R Alpha 6 Polyclonal Antibody detects endogenous levels of GABAA R Alpha 6 protein.
Immunogen Sequence	



Western blot analysis of mouse brain cells using GABAA R Alpha 6 Polyclonal Antibody diluted at 1:1000



Western blot analysis of lysates from HeLa and Jurkat cells, using GABRA6 Antibody. The lane on the right is blocked with the synthesized peptide.



Western blot analysis of various cells using GABAA R Alpha 6 Polyclonal Antibody diluted at 1:1000

This product is suitable for in-vitro studies under the RESEARCH USE ONLY [RUO] licence. This product must not be used as for diagnostic or other medical purposes.
St John's Laboratory Ltd, Knowledge Dock Business Centre, University Way, London, E16 2RD | Tel: 0208 223 3081